



## REGULAR MEETING OF THE BOARD OF TRUSTEES

RVS EDUCATION CENTRE  
2651 CHINOOK WINDS DR. SW  
AIRDRIE, AB

ZOOM LINK: <https://rockyview.zoom.us/my/rvsboard>

**MARCH 24, 2022**

10:00 a.m. Regular Board Meeting

### AGENDA

1. Call to Order  
*Rocky View Schools would like to acknowledge the land and recognize all the Indigenous Peoples whose footprints have marked these lands from time immemorial. Together, we can learn and honour the ways of knowing of Indigenous Peoples for all future generations.*
2. Approval of Agenda
3. In Camera Meeting
4. Motions Arising from In Camera
5. Approval of Minutes
  - a) Special Board Meeting – February 11, 2022
  - b) Regular Board Meeting – March 10, 2022
6. Exemplary Practice/ Student Showcase
  - a) Herons Crossing and Fireside Read-a-thon
7. Superintendent's Report
8. Chair's Report/Correspondence
9. Committee Reports
  - a) School Councils
  - b) Transportation (w/motions)
  - c) Planning
  - d) Other
10. Trustee Reports
11. New Business
12. Adjournment

This unofficial agenda is subject to change and is not *official* until approved at the Board meeting.



# EXEMPLARY PRACTICE

TO: THE BOARD OF TRUSTEES

FROM: THE SUPERINTENDENT OF SCHOOLS

---

**Date of Meeting:** March 24, 2022

**Showcase Name:** Herons Crossing School and Fireside School Read-a-thon Challenge

**Teachers:** Andrea Craigie (Herons Crossing), Chantal Chapin (Herons Crossing), Tara Sly (Fireside), David Banderk (Fireside)

**Student Presenters:** Natalia Andrew (Herons Crossing, Grade 8), Matilda Anderson (Herons Crossing, Grade 1), Bella Tanzola (Grade 7, Fireside)

## **Project Description**

Students in Kindergarten to Grade 8 at Herons Crossing School in Airdrie and Fireside School in Cochrane recently completed a month-long contest of reading and fundraising. Already a tradition at many Airdrie schools, Fireside adopted a read-a-thon model similar to Herons Crossing at the suggestion of Chantal Chapin, who is a teacher at Herons Crossing and a parent of a Fireside student.

Both schools tallied the number of minutes students spent reading either at home and at school between Jan. 27 and Feb. 27. Students could also log the time they were read to or spent listening to audiobooks. This put everyone on an equal footing, regardless of age or reading ability. Several incentives and prizes were offered to students, and two trustees – Board Chair and Ward 6 Trustee Fiona Gilbert (Cochrane) and Ward 3 Trustee Fred Burley (Airdrie) – championed Fireside and Herons Crossing, respectively. As the trustee of the school that raised the second most amount of money, Trustee Burley will wear Fireside colours during the meeting.

The Read-a-thon Challenge promotes several outcomes of RVS' Four-Year Plan. It encourages students to demonstrate ownership of their learning and engage in real-world learning opportunities that matter to them. With a focus on promoting literacy, it helps students acquire core competencies and meet learning outcomes. The fundraising component also helps students make a positive difference in their school and community.



**SUPERINTENDENT'S REPORT**  
REGULAR MEETING OF THE BOARD OF TRUSTEES

**MARCH 24, 2022**

**AGENDA**

- |                                       | <b>ACTION</b> |
|---------------------------------------|---------------|
| 1. 2023-2026 Capital Plan             | Directive     |
| 2. Modular Units Relocation           | Directive     |
| 3. Changes to 2022/23 School Calendar | Directive     |
| 4. Edwin Parr Award Nomination        | Information   |

A handwritten signature in black ink, appearing to read "Greg Luterbach", with a small star-like mark above the end of the signature.

Greg Luterbach  
Superintendent of Schools



# DIRECTIVE FOR ACTION

TO: THE BOARD OF TRUSTEES

FROM: THE SUPERINTENDENT OF SCHOOLS

**Directive for Action Item: Three Year Capital Plan**

**Date of Meeting: March 24, 2022**

**Background:**

Each school division in Alberta is required to submit their list of capital requests, in order of priority, by April 1<sup>st</sup> of each calendar year.

**Current Status:**

See below for the Capital Priorities proposed by RVS administration. The proposed 2023-2026 Capital Plan document provides background information used to determine priorities. Please see attached.

Proposed Priority	Capital Project	Build Out Capacity	Community	Type of Project	Site Readiness Expected
<b>2023 BUDGET YEAR</b>					
1	Airdrie K-8	900	Airdrie	New Construction	Ready
2	Cochrane K-5	600	Cochrane	New Construction	Ready
3	Chestermere K-9	900	Chestermere	New Construction	2022
4	Airdrie High School	1,500	Airdrie	New Construction	2022
<b>2024 BUDGET YEAR</b>					
5	Airdrie K-8	900	Airdrie	New Construction	2023
6	Chestermere High School	1,500	Chestermere	New Construction	2023
7	Cochrane K-8	900	Cochrane	New Construction	2023
8	Springbank K-8	900	Harmony	New Construction	Ready
<b>2025 BUDGET YEAR</b>					
9	Langdon K-5	600	Langdon	New Construction	TBD
10	Cochrane K-8	900	Cochrane	New Construction	TBD
11	Crossfield K-8	600	Crossfield	New Construction	2022
12	Airdrie K-8	900	Airdrie	New Construction	TBD



# DIRECTIVE FOR ACTION

TO: THE BOARD OF TRUSTEES

FROM: THE SUPERINTENDENT OF SCHOOLS

---

## **Alternatives:**

### **Alternative I:**

The Board of Trustees approve the 2023-2026 Capital Plan Priorities as presented, directing administration to submit the Capital Plan Priorities to Alberta Education.

### **Alternative II:**

The Board of Trustees approve the 2023-2026 Capital Plan Priorities as amended, directing administration to submit the revised Capital Plan Priorities to Alberta Education.

## **Recommendation:**

The Board of Trustees approve the 2023-2026 Capital Plan Priorities as presented, directing administration to submit the Capital Plan Priorities to Alberta Education.

A white line-art outline of a schoolhouse is centered on a solid purple background. The schoolhouse has a gabled roof with a small rectangular flag on top. A circle is positioned in the center of the gable. Below the gable are two vertical rectangular windows. At the base of the schoolhouse is a wider rectangular foundation.

# I CAN

CONNECT • ACHIEVE • NAVIGATE

**2023 – 2026 CAPITAL PLAN**

**ROCKY VIEW SCHOOLS**



# Table of Contents

- Capital Plan Overview ..... 3**
  - Summary ..... 3
  - RVS At A Glance ..... 5
  - Historical Enrolment and Growth ..... 7
  - Population and Growth ..... 8
  - Capacity and Utilization ..... 9
  
- Priorities ..... 12**
  - Capital Priority List ..... 12
  - Priority 1: Airdrie Kindergarten – Grade 8 ..... 13
  - Priority 2: Cochrane Kindergarten – Grade 5 ..... 16
  - Priority 3: Airdrie High School ..... 19
  - Priority 4: Chestermere Kindergarten – Grade 9 ..... 22





# 2023-2026 Capital Plan Overview

## Summary

RVS provides a positive quality learning experience to over 26,625 public students in Kindergarten to Grade 12, and an appropriate number of spaces for students is required to support their learning and wellbeing. RVS is in urgent need of government approval and funding for new schools, additions and modular classrooms to accommodate our fast-growing communities. Investing in space for students improves students' opportunity and ability to learn and achieve their absolute best.

Among communities with populations over 10,000 people, Cochrane and Airdrie are the two fastest growing Alberta communities, with Chestermere in ninth, according to recently released census data. Prioritizing the need for schools in these communities is challenging as they are experiencing rapid growth at the same time.

**With hundreds of children expected in these communities the need for space is immediate.**

Without additional school facilities RVS' overall utilization rate is expected to increase from the current 87 per cent to a critical rate of 101 per cent by 2026. Appropriate funding for new schools is required to ensure RVS' school capacity can keep up with student population growth in its communities and does not experience the accommodation challenges it struggled with several years ago.



## RVS At a Glance

### Vision

Rocky View Schools is a world-class learning organization where all students achieve their absolute best.

### Purpose

Rocky View Schools connects with all students to ensure that everyone learns, belongs, and succeeds.



### 2021/22 By The Numbers



- 16** K – 6/7/8/9
- 12** Elementary Schools
- 8** Middle Schools
- 8** High Schools
- 3** Colony Schools
- 3** RVS Community Learning Centres
- 1** Online High School
- 1** Online K – Gr. 8 School
- 1** K – 12

### RVS:

- represents a resident population of over 170,000 people.
- educates over 26,600 students.
- transports over 10,000 students daily, including students attending Catholic schools located in the same geographic area.
- includes over 1,750 square miles (456,372 hectares) of land.
- is the fifth largest school jurisdiction in Alberta.

### Students Come From Diverse Areas Including:

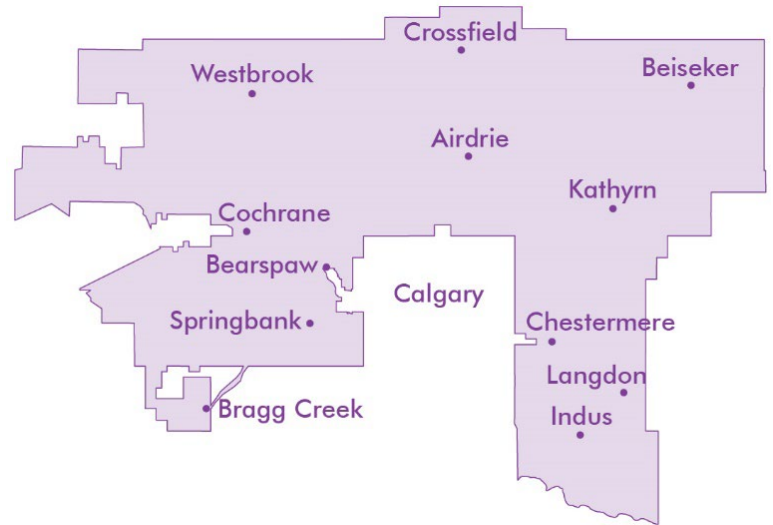
- remote locations in the foothills of the Rocky Mountains;
- Tsuu T’ina First Nation and Stoney Nakoda First Nation;
- farms and ranches in areas where there is low population density;
- acreage communities;
- Hutterite colonies;
- satellite/suburb communities experiencing intense population growth; twelve urban centres (hamlets, towns or cities); and,
- areas annexed by Calgary where the school jurisdiction boundaries remain unchanged.

RVS is creative in maximizing the existing space to offer the best learning environment possible; even so, more space is required.

## Our Schools

As of September 2021, the regular school buildings in RVS boundaries include:

- **23** core schools built since 1990 and generally located in the major growth centres of Cochrane, Airdrie, Chestermere and Langdon. Two of these were replacement schools
- **11** core schools built in the 1970s and 1980s. These are generally in original condition with varying degrees of upgrades, such as additions and minor modernizations
- **15** schools with significant renovations or additions, including several where the original building dates to the 1950s
- **385** portable or modular classrooms dating from 1979 to present
- **4** Private, Public Partnership (P3) schools opened since 2012
- **6** New school buildings opened since 2016



## Upcoming Approved Facilities:

- Langdon Junior/Senior High School: This facility is being built as a P3) school and is expected to be completed by September 2024. The opening capacity of the school will be 900 student spaces.
- Bow Valley High School Addition: Announced March 4, 2022.



## Historical Enrolment and Growth

RVS, Alberta's fifth largest school division, increases each year by about 750-1,000 students or four to five per cent growth annually. Generally, RVS' percentage of growth is double the growth of the larger school authorities in Calgary. This is partly due to families with school age children moving into RVS communities and partly due to natural growth.

Did You Know?

	2017	2018	2019	2020	2021
<b>Kindergarten</b>	<b>1,976</b>	<b>2,008</b>	<b>1,918</b>	<b>1,527</b>	<b>1,907</b>
Grade 1	2,006	2,033	2,082	1,893	1,972
Grade 2	1,911	2,072	2,062	1,954	2,062
Grade 3	1,996	1,933	2,123	2,017	2,085
<b>Summary</b>	<b>5,913</b>	<b>6,038</b>	<b>6,267</b>	<b>5,864</b>	<b>6,119</b>
Grade 4	2,041	2,038	2,019	2,035	2,147
Grade 5	1,953	2,115	2,108	1,962	2,135
Grade 6	1,829	1,979	2,178	2,093	2,109
<b>Summary</b>	<b>5,823</b>	<b>6,132</b>	<b>6,305</b>	<b>6,090</b>	<b>6,391</b>
Grade 7	1,726	1,863	2,005	2,117	2,163
Grade 8	1,700	1,750	1,894	1,986	2,174
Grade 9	1,710	1,770	1,815	1,953	2,145
<b>Summary</b>	<b>5,136</b>	<b>5,383</b>	<b>5,714</b>	<b>6,056</b>	<b>6,482</b>
Grade 10	1,612	1,666	1,723	1,764	1,991
Grade 11	1,485	1,569	1,626	1,675	1,824
Grade 12	1,465	1,474	1,541	1,638	1,908
<b>Summary</b>	<b>4,562</b>	<b>4,709</b>	<b>4,890</b>	<b>5,077</b>	<b>5,723</b>
<b>Sub Total</b>	<b>23,410</b>	<b>24,270</b>	<b>25,094</b>	<b>24,614</b>	<b>26,622</b>
Colonies	44	52	42	46	Enrolments above include Colonies and CLC students
Community Learning Centres (CLCs) and Alternative Programs	316	392	503	629	
<b>Total</b>	<b>23,770</b>	<b>24,714</b>	<b>25,637</b>	<b>25,289</b>	<b>26,622</b>
<i>Year-to-Year Growth</i>	4.7%	4.0%	3.7%	-1.36%	5.27%
	1,058	944	923	-348*	1,333

\*Negatively impacted by COVID-19 pandemic

Most student growth is in the municipalities of Airdrie, Cochrane and Chestermere. The smaller centers, such as Beiseker and Indus, have remained relatively stable. The below table shows the growth in the different areas of RVS over the past five years.

	2017	2018	2019	2020	2021
Airdrie	9,902	10,516	11,075	11,101	11,566
<i>Difference</i>	675	614	559	26	465
Cochrane/Westbrook/Bearspaw	5,186	5,450	5,788	5,693	6,004
<i>Difference</i>	180	264	338	-95	311
Chestermere/Indus/Langdon	5,043	5,110	5,054	4,781	4,876
<i>Difference</i>	243	67	-56	-273	95
Bragg Creek/Springbank	2,148	2,112	,2050	1,986	2,041
<i>Difference</i>	-47	-36	-62	-64	55
Beiseker/Kathryn	480	443	458	392	412
<i>Difference</i>	-13	-37	15	-66	20
Crossfield	651	639	669	661	668
<i>Difference</i>	27	-12	30	-8	7
Colonies	44	52	42	46	42
<i>Difference</i>	1	8	-10	4	-4
Community Learning Centres and Alternative Programs	316	392	501	629	406
<i>Difference</i>	-8	76	109	128	-223
Online School	n/a	n/a	n/a	n/a	607
<i>Difference</i>	n/a	n/a	n/a	n/a	n/a
<b>Total</b>	<b>23,770</b>	<b>24,714</b>	<b>25,637</b>	<b>25,289</b>	<b>26,662</b>





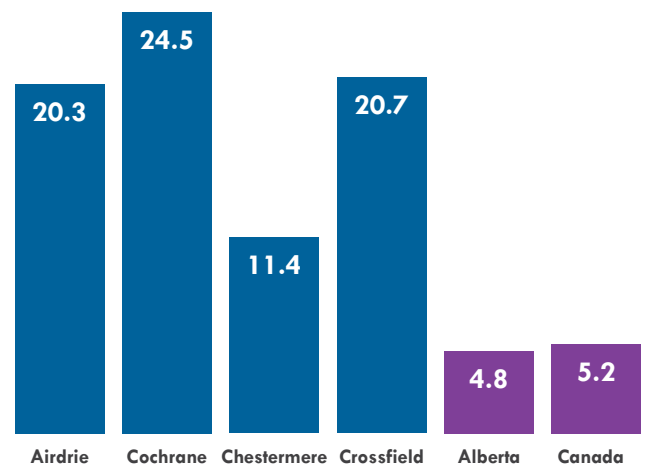
## Population and Growth

Smaller municipalities just outside Calgary and Edmonton have experienced the largest percentage of growth in recent years. Airdrie, Cochrane, Chestermere and Crossfield have all experienced population growth well into double-digit percentages.

- Airdrie's population grew from 61,281 to 74,100 from 2016 to 2021, an increase of 20.3 per cent.
- Cochrane's population grew from 25,853 to 32,199 from 2016 to 2021, an increase of 24.7 per cent.
- Chestermere's population grew from 19,887 to 22,163 from 2016 to 2021, an increase of 11.4 per cent.
- Crossfield's population grew from 2,983 to 3,559 from 2016 to 2021, an increase of 20.7 per cent.

Since 2016 the urban centres of Cochrane, Airdrie and Chestermere are within the top ten fastest growing municipalities in Alberta (with populations over 10,000).

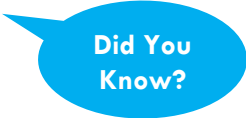
**Per Cent Population Change of RVS Urban Centres and Higher Level Geographies (2016-2021)**



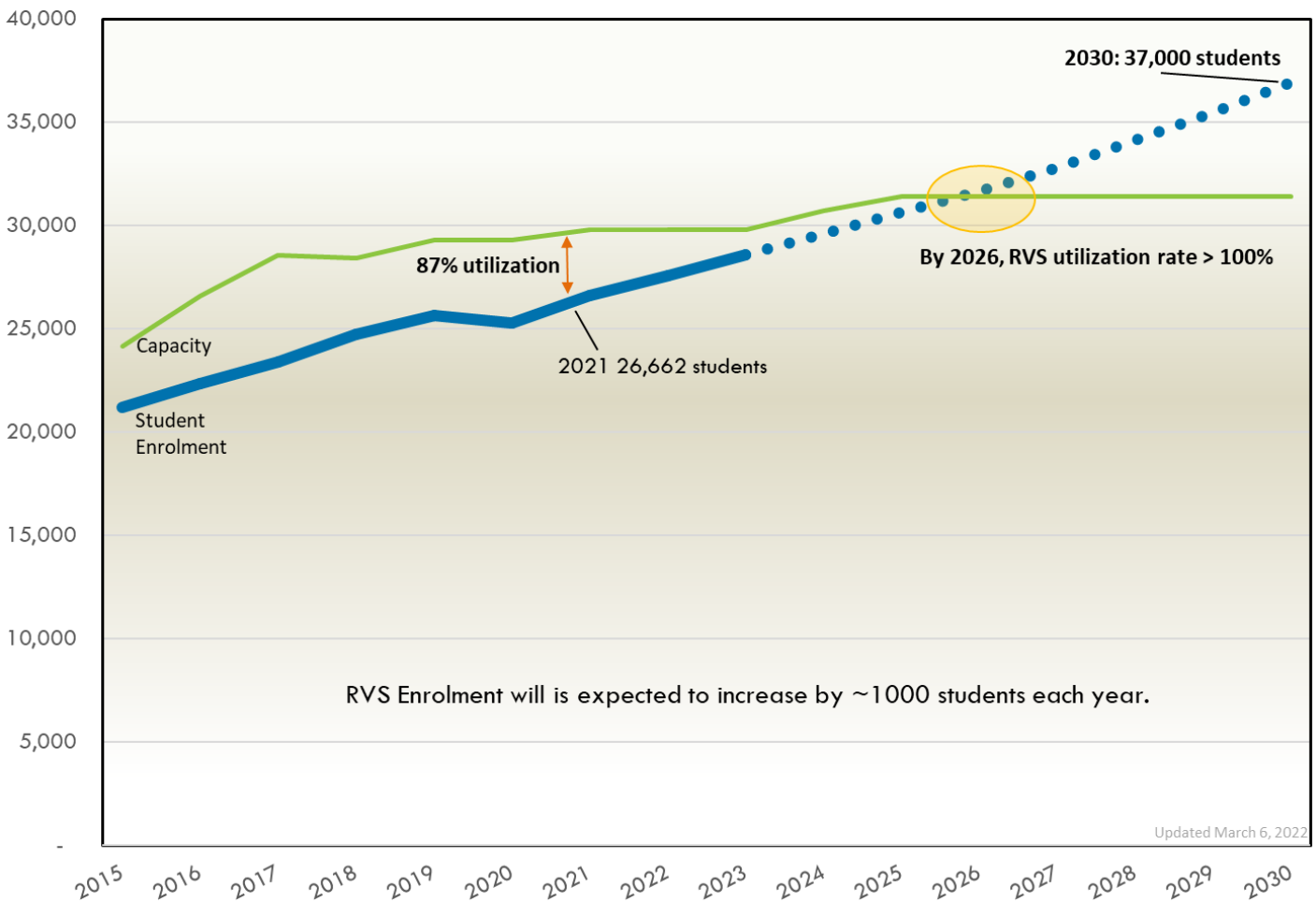
## Capacity and Utilization

With a growth of 750 to 1,000 students annually, RVS is continually in need of additional school capacity. The division will add 900 student spaces with the opening of the Langdon Junior/Senior High School in 2024, and Cochrane's Bow Valley High School will benefit from more spaces in the coming years with the recent announcement of an addition and modernization. Airdrie's Northcott Prairie School opened in 2020. These permanent spaces are valuable in ensuring an appropriate number of spaces are available to students to support their learning and wellbeing.

Looking forward, RVS continues to need additional school facilities. With no additional capacity, **RVS' utilization rate will continue to increase from the current 87 per cent to a critical utilization rate of 101 per cent by 2026.** This projected utilization rate includes the added capacity of Langdon Junior/High School and the Bow Valley High School addition.



### RVS Enrolment and Capacity



**The need for more school capacity to accommodate RVS' student growth is immediate.**

**Did you know?**  
One-third of RVS' capacity is modular.



## Modular Classrooms

### Procurement of Modular Classrooms

The term *modular classroom* is used to describe a moveable classroom unit built at a central location and transported to and installed at schools across Alberta. Modular classrooms have long been used as added space for schools and are a cost-effective way to allow for the expansion and contraction of a school building as the student population fluctuates.

Provincial funding, through Alberta Education's Annual Modular Classroom Program, is provided for the addition of new or the relocation of existing modular classrooms to ease enrolment pressures in communities where school jurisdictions are experiencing high student enrolment growth. Funding may also be provided for the replacement of existing portable classrooms due to demonstrated health and safety issues.

Modular classrooms can be placed by either directly attaching the units to the core school, requiring a "connecting link", or freestanding units (i.e., not attached to the main school structure). A connecting link is the connecting corridor used when attaching modular classrooms to the permanent building.

Annually, Alberta Education requires school divisions across the province to review their accommodation needs to determine the demand for additional modular units. RVS submitted its latest modular unit request on Nov. 1, 2021.

Modular classrooms are an important part of strategic facility planning in RVS, as **one-third of RVS capacity is modular** classrooms. As seen in the table on the following page, 385 of RVS' classrooms are modular: the equivalent to about 9,625 students learning in a modular classroom.



## Location of RVS' Modular Classrooms

School	Number of Modulars	School	Number of Modulars
A.E. Bowers	14	Kathryn	2
Banded Peak	4	Langdon	8
Beiseker	2	Manachaban	10
Bert Church	8	Meadowbrook	6
Bow Valley	10	Mitford	12
Chestermere High	4	Muriel Clayton	10
Chestermere Lake	11	Northcott Prairie	2
Cochrane High	10	Nose Creek	14
Cooper's Crossing	12	Prairie Waters	8
Crossfield	8	Prince of Peace	2
C.W. Perry	16	Rainbow Creek	14
École Edwards	8	Ralph McCall	14
East Lake	16	RancheView	15
Elbow Valley	12	R.J. Hawkey	10
Elizabeth Barrett	12	Sarah Thompson	12
Fireside	6	Springbank High	10
George McDougall	4	Springbank Middle	4
Glenbow	14	Westbrook	10
Heloise Lorimer	10	W.G. Murdoch	4
Herons Crossing	11 (+washroom unit stored onsite)	Windsong Heights	11
Indus	8 (+washroom unit stored onsite)	W.H. Croxford	6
<b>Total Number of Modulars</b>			<b>386</b>

42 out of 54 RVS schools have modular units.

# Priorities

The following pages outline RVS' Capital Priorities for the Government of Alberta's budget years 2023, 2024 and 2025. Detailed information for each Year One priority is provided after the overall three-year capital plan summary.

## Capital Priority List

Proposed Priority	Capital Project	Build Out Capacity	Community	Type of Project	Site Readiness Expected
<b>2023 BUDGET YEAR</b>					
1	Airdrie K – 8	900	Airdrie	New Construction	Ready
2	Cochrane K – 5	600	Cochrane	New Construction	Ready
3	Chestermere K – 9	900	Chestermere	New Construction	2022
4	Airdrie High School	1,500	Airdrie	New Construction	2022
<b>2024 BUDGET YEAR</b>					
5	Airdrie K – 8	900	Airdrie	New Construction	2023
6	Chestermere High School	1,500	Chestermere	New Construction	2023
7	Cochrane K – 8	900	Cochrane	New Construction	2023
8	Springbank K – 8	900	Harmony	New Construction	Ready
<b>2025 BUDGET YEAR</b>					
9	Langdon K – 5	600	Langdon	New Construction	TBD
10	Cochrane K – 8	900	Cochrane	New Construction	TBD
11	Crossfield K – 8	600	Crossfield	New Construction	2022
12	Airdrie K – 8	900	Airdrie	New Construction	TBD

# Priority 1: Airdrie Kindergarten – Grade 8

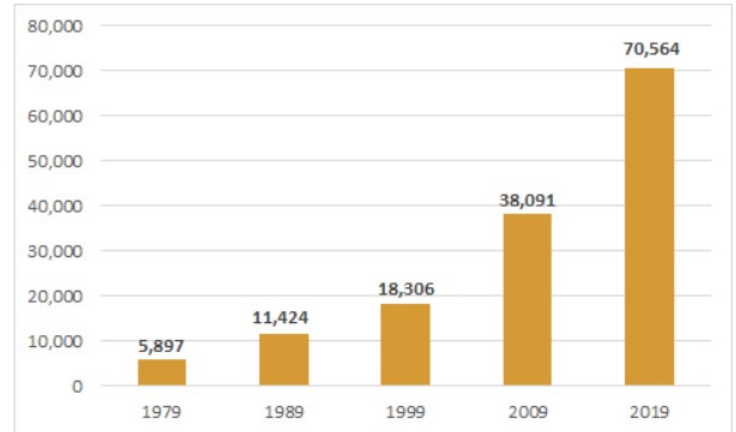
## Information

Airdrie is Alberta’s second and Canada’s 25th fastest growing municipality (populations over 10,000). School buildings in Airdrie reflect this rapid growth. RVS has 17 school buildings in Airdrie; of these, 16 have modular units attached or freestanding and 13 of these schools have more than 10 modular classrooms. Additionally, between 2014 and 2019, five new RVS schools and one addition opened to students in Airdrie – that is more than one school each year!

Northcott Prairie School opened in Airdrie in 2020. This was the last school RVS opened. With no new facilities having opened in Airdrie for the past two years and with at least three years required to design and construct a new school, Airdrie will not have a new school open for over five years.

Site Readiness - A site in the community of South Windsong in the southwest region of Airdrie is ready for construction. It is within an area where there is a great deal of new development occurring.

Airdrie population growth over 40 years



Source: City of Airdrie Civic Census  
\*Most current, 2020 was not a census year



Airdrie K – Grade 8 Site

## Student Enrolment and Projections

The table below is the 2022 RVS student population in Airdrie. Note the number of students at Grade 1 intake is 210 students greater than the number of students leaving at Grade 12. In addition to this natural increase at entry, RVS' Airdrie student enrolments increases annually by approximately 2 – 2.5 per cent students per grade.

Grade	K	1	2	3	4	5	6	7	8	9	10	11	12
Enrolment	890	953	917	932	957	946	949	933	967	974	961	851	743

From 2014 to 2019, student population in Airdrie increased by about 600 students annually. Birth rate trends in Airdrie indicate a slight decline in the number of births in Airdrie over the last few years, which will impact student enrolments; however, an annual increase of 300-400 students per year for the next five years is still expected in Airdrie.

The table below shows enrolments and projections for Kindergarten – Grade 8 students. Though it appears there is sufficient capacity in schools with 1,587 spaces currently available, this space is throughout all 14 elementary/middle schools and will reduce quickly as student enrolments increase. In 2026 – the earliest RVS could open a new school (if funding were approved in spring 2023) – there will only be a negligible 237 student spaces available.

Airdrie			
Year	Enrolments K–8	Capacity	Capacity – Enrolment
2021	8,358	9,945	1,587
2022	8,484	9,945	1,461
2023	8,727	9,945	1,218
2024	9,032	9,945	913
2025	9,360	9,945	585
2026	9,708	9,945	237
2027	10,127	9,945	-182
2028	10,613	9,945	-668
2029	11,168	9,945	-1,223
2030	11,718	9,945	-1,773



## Challenge

As indicated by the chart above, Airdrie Kindergarten – Grade 8 schools will be over capacity shortly. It is important to note many Airdrie schools are already “beyond-buildout capacity,” as modular classrooms are on core schools that were not designed to hold the number of modular classrooms currently on the school. The only school that can properly accept more modular classrooms is Northcott Prairie School, which opened in 2020. This school, also located in southwest Airdrie, will be 101 per cent utilized by 2023 with the full allotment of modular classrooms.

## Solutions

The solutions for high utilization situations are to either move students to a school with lesser utilization, add more modular classrooms to existing schools or add more permanent space (additions or new school construction).

1. Accommodate students differently: RVS reviews accommodation needs and facility spaces annually. In Airdrie, accommodation changes will be made in the next few years to maximize existing capacity; however, this does not replace the need for additional permanent capacity.
2. Modular classrooms: RVS is proposing moving modular classrooms within the division, particularly from schools with below 85 per cent utilization to schools expected to be greater than 100 per cent utilization. Provincial funding from Alberta Education’s Modular Classroom Program has been requested for these relocations.
3. Add permanent space: a new school is needed to accommodate students in Airdrie. Five years from now, there will not be available capacity in which to accommodate Kindergarten – Grade 8 students if another school is not open. New school funding is required quickly in order meet Airdrie’s expected student population growth.

### Preferred Solution:

Construction of a new school with a core capacity of 550-650 student spaces, with a possible modular classroom addition of 250-350 capacity, for a total buildout capacity of 900 student spaces.



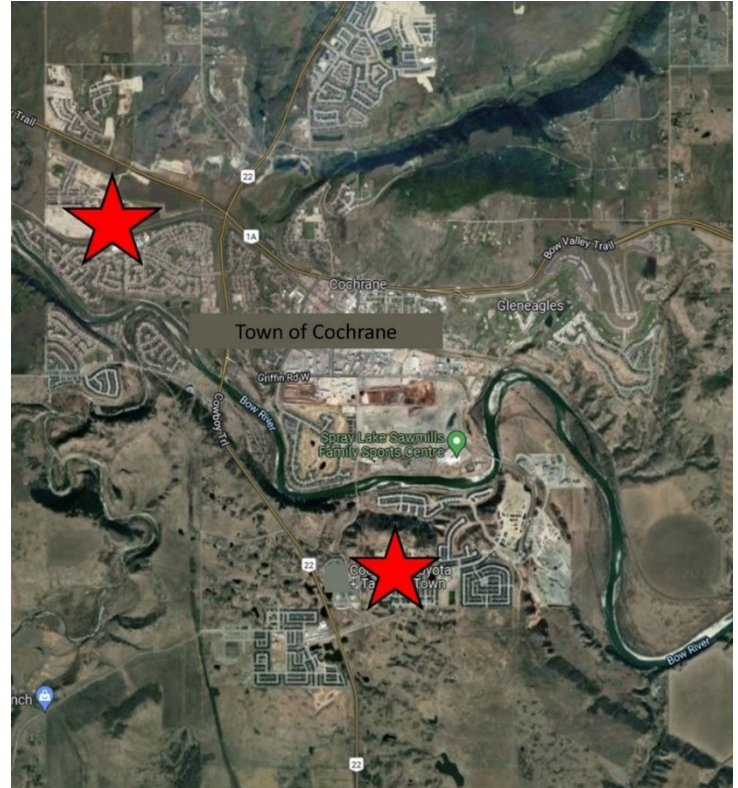
# Priority 2: Cochrane Kindergarten – Grade 5

## Information

It is no surprise that RVS' Cochrane enrolments continue to climb; the municipality is the fastest growing in Alberta, and the 11th fastest growing in Canada (over 10,000 population).

RVS is experiencing student population growth of approximately 300 students annually in the area; a new school is required every two to three years in Cochrane just to keep up with this growth. The last school that opened in Cochrane was in the Fireside community, five years ago in 2017.

Availability of school site readiness has been a challenge in Cochrane in recent history. Fortunately, two sites are expected to be ready for school construction by fall of 2022 with one of these sites currently construction ready. This is a change from the previous five years, in which no sites in Cochrane have met "site readiness."



## Student Enrolment and Projections

Student population in Cochrane increases at Kindergarten and Grade 1 intake then across the grades. This chart shows the number of one-year-old children in Cochrane from 2011 to 2019. In 2011 there were 273 one-year-old children living in

Cochrane, compared to 2019 when there were 525. That's almost double the number of one-year-olds in an eight-year period. This trend is expected to continue as new communities develop.

In addition to increasing births in Cochrane (as shown by the one-year-old population), in-migration also adds to the natural increase in the cohort; for example, that same cohort of 273 one-year-old children in 2011 increased to 430 five-year-old children four years later.

Similarly, RVS experiences growth in enrolments of two per cent from one grade to the next. For instance, for every 500 students in Grade 3, RVS can expect an additional 10 students the next year in Grade 4. When compounded across twelve grades, that is an additional 120 students in Cochrane RVS schools annually, in addition to the increase at the Kindergarten and Grade 1 intake.

Taking into consideration the above factors – natural increase at intake and in-migration – RVS is projecting the continued increase of ~300 Kindergarten – Grade 8 students annually for the next five years. See table below.

Cochrane			
Year	Enrolments K–8	Capacity	Capacity – Enrolment
2021	3,569	3,901	332
2022	3,917	3,901	-16
2023	4,085	3,901	-184
2024	4,308	3,901	-407
2025	4,512	3,901	-611
2026	4,783	3,901	-882
2027	5,102	3,901	-1,201
2028	5,447	3,901	-1,546
2029	5,833	3,901	-1,932
2030	6,222	3,901	-2,321

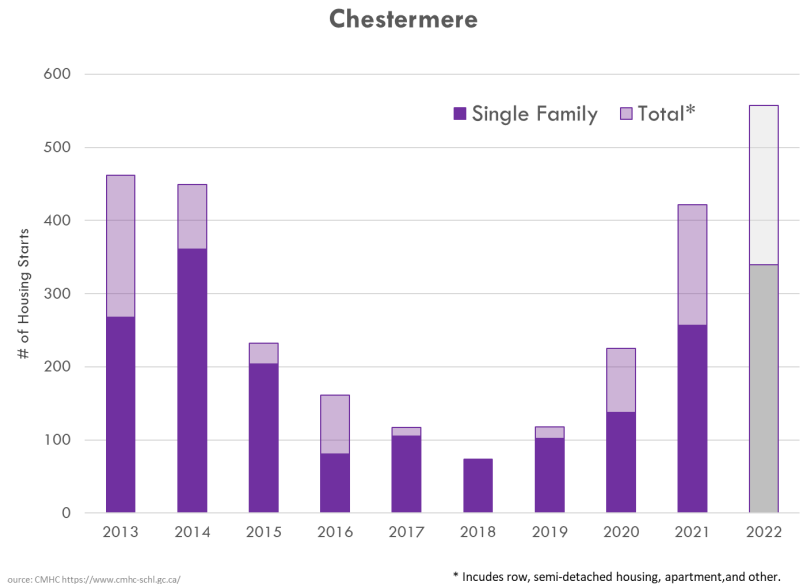




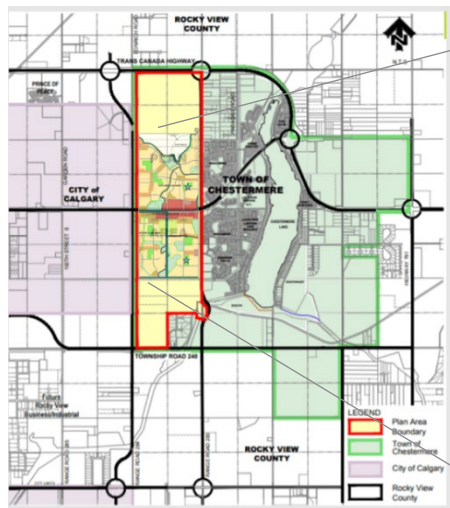
# Priority 3: Chestermere Kindergarten – Grade 9

## Information

Student population in Chestermere was increasing at an unprecedented rate five to ten years ago with enrolments increasing by 200-300 students annually. Enrolment growth slowed beginning in 2018, as housing construction in Chestermere stalled. This pause in new builds occurred due to needed stormwater management and utility infrastructure expansion. As can be seen on the chart below, eight to 10 years ago housing starts in Chestermere were around 450 per year. It then dropped to a low in 2018 of only 75. Also evident is the rebound in housing starts over the last three years with 2021 returning to near 2013 levels. To date, 2022 is on track to be the biggest year for new builds in the past 10 years, as the housing starts for January and February are 20 per cent greater than the same months in 2021.



The areas of growth in Chestermere are mainly on the west side of the city. The nearby schools are currently full, and two school sites are very close to being site ready with an expectation of at least one being complete at the end of this construction season.



## Student Enrolment and Projections

The below table is the 2021/22 RVS student population in Chestermere by grade. The intake at Grade 1 is 100 students greater than the number of students leaving in Grade 12. This natural increase is expected to intensify due to the increasing development in Chestermere.

### 2021 Chestermere Student Population

Grade	K	1	2	3	4	5	6	7	8	9	10	11	12
Enrolment	290	363	343	379	374	406	398	395	381	402	354	332	273

The table below shows enrolments and projections for Kindergarten – Grade 9 students.

Chestermere			
Year	Enrolments K-9	Capacity	Capacity – Enrolment
2021	2,492	2,949	457
2022	2,653	2,949	296
2023	2,724	2,949	225
2024	2,837	2,949	112
2025	2,963	2,949	-14
2026	3,133	2,949	-184
2027	3,320	2,949	-371
2028	3,565	2,949	-616
2029	3,834	2,949	-885
2030	4,151	2,949	-1,202





## Challenge

RVS faces three accommodation challenges in Chestermere.

1. As described above, RVS is expecting a surge of new students, particularly at intake of Kindergarten and Grade 1 due the current surge in housing starts.
2. RVS is losing overall student spaces in Chestermere with the closure of the Prince of Peace facility due to the lease expiring and the owner selling the facility to a private school.
3. There are three elementary schools and one middle school in Chestermere. Three of the schools have additional modular classrooms that cause the facilities to be at beyond-buildout capacity, which puts strain on the core school facilities including CTF spaces, gyms and corridors. The fourth school is a P3 school; RVS is not permitted to add more modular units to the facility as it is at buildout capacity and is not permitted to have a beyond-buildout capacity.

## Solutions

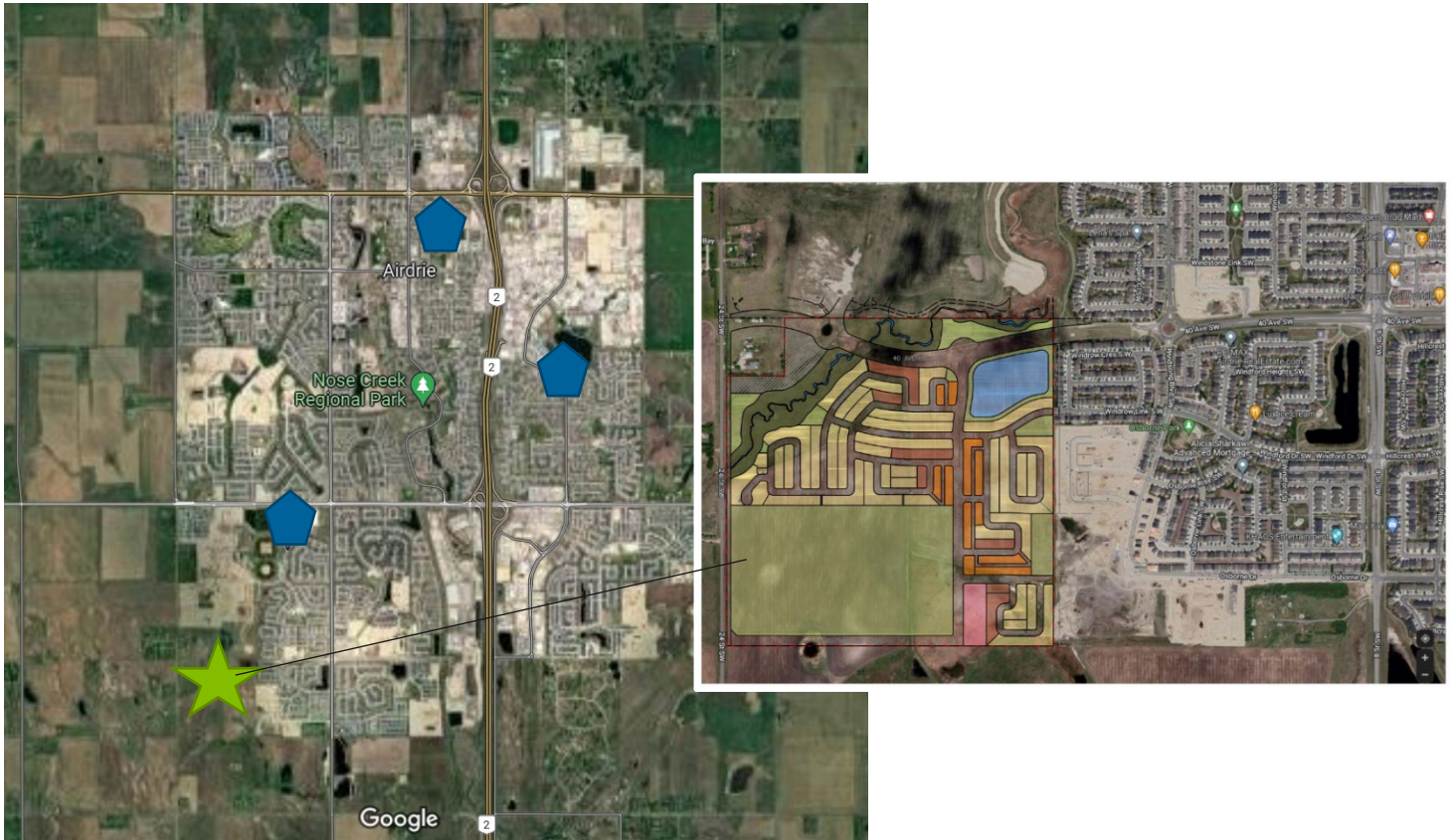
The opening of the Langdon Junior/Senior High School will assist in decreasing the utilization rate at Chestermere High School, which may allow for some short-term relief until the new Kindergarten – Grade 9 school is open to students.

A new Kindergarten – Grade 9 school is necessary to accommodate the expected student population in Chestermere.

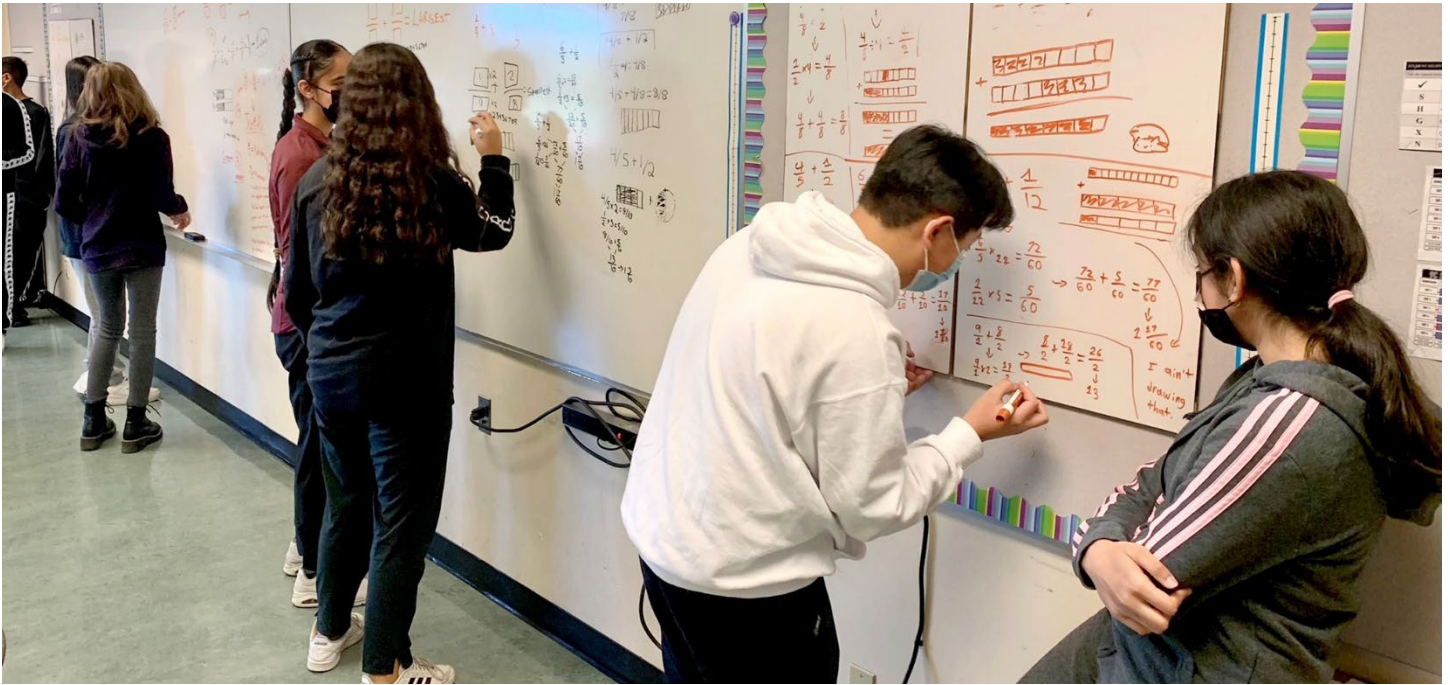
# Priority 4: Airdrie High School

## Information

RVS has three high schools serving Airdrie and surrounding rural area students. The site for the next Airdrie high school is expected to meet site readiness in 2022. RVS partnered with the City of Airdrie to secure and develop the land required for the new high school in southwest Airdrie. Possible joint use efficiencies are being considered with the City as the school will be adjacent to a proposed recreation centre.







### Student Enrolment and Projections

The need for another high school in Airdrie is evident considering enrolments at the high school level are out-pacing capacity.

Airdrie High School			
Year	Enrolments Gr. 9-12	Capacity	Capacity – Enrolment
2021	3,208	3,581	24
2022	3,557	3,731	-122
2023	3,853	3,731	-288
2024	4,019	3,731	-399
2025	4,130	3,731	-514
2026	4,245	3,731	-600
2027	4,331	3,731	-715
2028	4,446	3,731	-795
2029	4,526	3,731	-898
2030	4,629	3,731	-1,047



### Challenge

Adding modular classrooms is the only short-term solution to accommodate this enrolment growth. Unfortunately, RVS cannot add more modular classrooms to the Bert Church or W.H. Croxford sites. There is no space on the Bert Church site for more modular classrooms unless they are put on the sports field. W.H. Croxford cannot accommodate further modulars because it is at its maximum as a P3 school with a defined number.

Only George McDougall can take additional modular classrooms – the challenge is this high school has the smallest core building. Bert Church is currently beyond-buildout capacity and by September 2022, George McDougall will also be beyond-buildout capacity. Both schools will have freestanding modular classrooms to accommodate students.

While modular classrooms provide temporary space, they are not the solution particularly when the modular classrooms put the schools into a beyond-buildout capacity situation. They do not provide additional gymnasiums, learning commons, science labs or speciality shop spaces that are needed. Furthermore, the addition of modular classrooms on schools that are not designed for the added student populations puts further pressure on the existing core school, specifically congesting the smaller corridors and higher-class sizes in speciality spaces.

### Solutions

Funding the design of the high school in year one. This will allow the 18 months for design and construction and allow for opening of the permanent building to occur as soon as possible. At build-out, the permanent space will accommodate 1,500 student spaces in the core school with the ability to add 300 student spaces in modular units, resulting in a buildout capacity of 1,800 students.





# DIRECTIVE FOR ACTION

TO: THE BOARD OF TRUSTEES

FROM: THE SUPERINTENDENT OF SCHOOLS

**Item:** 2022 Modular Classroom Planning

**Date of Meeting:** March 24, 2022

**Background:**

- The modular classroom program normally runs in a cyclical annual pattern. November 1<sup>st</sup> modular requests are sent to Alberta Education and by March 1<sup>st</sup> school boards are informed of new modular unit or relocation approval. This allows enough time for the modular units to be constructed and placed on the receiving school facilities for students in September.
- This past year, on May 21, 2021, RVS received a letter from Alberta Education informing of the modular unit approvals for that year.
  - Bow Valley High School – relocation of six units
  - Manachaban – two relocations and two new units
  - Bert Church – eight new units
  - WH Croxford – six new units
- On October 28, 2021, the following motion was approved:

**MODULAR REQUESTS**

**#917-2021 MOTION BY TRUSTEE MELYSSA BOWEN:**

The Board of Trustees approves the submission to the Province for the additional 18 modular units in priority as outlined in the chart.

**CARRIED**

Table 1

Priority	School	Municipality	Number of new Additional Modular Unit Request	2021	2022	2023
1.	Mitford	Cochrane	2 units	101%	103%	104%
2.	Fireside	Cochrane	4 units	96%	104%	114%
3.	Northcott Prairie	Airdrie	6 units	97%	103%	108%
4.	George McDougall	Airdrie	6 units	91%	104%	109%

\* Mitford School Facility houses two distinct schools. Also, the 'accommodation capacity' is 600, whereas the Provincial Capacity is 665.

- This motion was carried due to a need for additional capacity at RVS schools due to increasing student enrolment.

**Current Status:**

- As of this date, RVS has not yet received communication from the province regarding approval of new modular classrooms or funding for the relocation of modular classrooms. However, schools in RVS continue to need additional modular classrooms due to growing enrolment; particularly the schools listed in Table 1 below.
- RVS relocate ten modular classrooms from division schools with lower utilization rates to schools with the greatest need for modular classrooms. See Tables 1, 2 and 3 for potential donor and receiving schools.
- The cost to relocate and install ten modular classrooms is expected to cost up to \$1.6 million.



# DIRECTIVE FOR ACTION

TO: THE BOARD OF TRUSTEES

FROM: THE SUPERINTENDENT OF SCHOOLS

**Table 1**

Potential Donor Schools (2 units from each school)	Projected Utilization	<i>Projected Utilization with Removal of Modular Units</i>
Prince of Peace		
A.E. Bowers	70%	77%
Ralph McCall	72%	79%
Coopers Crossing	73%	80%
Elbow Valley	62%	67%

**Table 2**

Receiving School	Number of Units	Projected Utilization w/o Units	Projected Utilization with Units
Mitford	2 units	106%	98%
Northcott Prairie	4 units	105%	94%
Fireside	1 unit	97%	94%
George McDougall	3 units	104%	96%

**Table 3**

<i>Potential Donor</i>	<i>Type</i>	<i>Receiving</i>
Prince of Peace	A/B	Mitford
AE Bowers	A/A	Northcott Prairie
Ralph McCall	A	Northcott Prairie
Ralph McCall	B	George McDougall
Coopers Crossing*	A	Northcott Prairie
Cooper's Crossing*	B	George McDougall
Elbow Valley	A	Fireside
Elbow Valley	B	George McDougall



# DIRECTIVE FOR ACTION

TO: THE BOARD OF TRUSTEES

FROM: THE SUPERINTENDENT OF SCHOOLS

---

## **Alternatives:**

### **Alternative I:**

The Board of Trustees requests the Government of Alberta fund these 10 modular classroom moves and if not funded by province, authorizes the use of 2021/22 funds to support the relocation of these modular classrooms within the division.

### **Alternative II:**

The Board of Trustees approves ten modular unit relocations only if supported financially by the province.

### **Alternative III:**

The Board of Trustees directs administration to pursue an alternate course of action.

### **Recommendation:**

The Board of Trustees requests the Government of Alberta fund these 10 modular classroom moves and if not funded by province, authorizes the use of 2021/22 funds to support the relocation of these modular classrooms within the division.



# DIRECTIVE FOR ACTION

TO: THE BOARD OF TRUSTEES

FROM: THE SUPERINTENDENT OF SCHOOLS

## Attachment A: Potential Donor Schools:

<b>A.E. Bowers School</b>								
Total - Fl and Eng	K	1	2	3	4	5	TOTAL	Prov. Util
2019	91	108	80	99	99	24	501	83%
2020	71	83	105	83	89	28	459	75%
2021	64	84	82	93	74	33	430	71%
<b>2022</b>	<b>72</b>	<b>75</b>	<b>79</b>	<b>80</b>	<b>91</b>	<b>29</b>	<b>426</b>	70%
2023	71	78	77	75	80	39	420	69%
2024	71	72	73	76	69	33	394	64%
2025	61	70	72	68	70	45	386	64%
2026	64	65	69	65	66	41	370	61%

Capacity = 584

<b>Ralph McCall School</b>							
	K	1	2	3	4	TOTAL	Prov. Util
2018	123	95	115	107	129	569	84%
2019	85	118	100	114	113	530	79%
2020	71	89	113	98	117	488	75%
2021	80	99	88	114	87	468	71%
<b>2022</b>	<b>81</b>	<b>101</b>	<b>102</b>	<b>86</b>	<b>118</b>	<b>488</b>	72%
2023	74	95	104	101	90	464	68%
2024	78	92	98	102	99	469	69%
2025	72	96	91	99	105	463	68%
2026	76	90	94	93	103	456	67%

Capacity = 625

<b>Cooper's Crossing School</b>										
	PIP	K	1	2	3	4	5	Total	K-5	Utilization
2018	21	117	122	120	104	111	60	655	634	106%
2019	18	71	92	82	84	77	96	520	502	81%
2020	18	55	72	87	75	74	71	452	434	71%
2021	19	78	67	74	84	80	74	476	457	72%
<b>2022</b>	<b>19</b>	<b>80</b>	<b>82</b>	<b>70</b>	<b>72</b>	<b>84</b>	<b>77</b>	<b>484</b>	<b>465</b>	73%
2023	19	53	71	74	62	72	78	429	410	66%
2024	19	46	52	68	73	64	72	394	375	61%
2025	19	47	48	51	66	78	65	374	355	58%
2026	19	46	58	46	54	63	78	364	345	56%

Capacity = 600

<b>Elbow Valley</b>							
	K	1	2	3	4	TOTAL	Utilization
2018	85	106	116	105	122	534	71%
2019	62	98	109	118	105	492	66%
2020	70	72	100	120	121	483	65%
2021	87	96	81	93	114	471	62%
<b>2022</b>	<b>86</b>	<b>98</b>	<b>100</b>	<b>86</b>	<b>116</b>	<b>486</b>	62%
2023	74	97	104	102	86	463	60%
2024	78	86	99	109	101	473	61%
2025	61	88	89	109	111	458	60%
2026	71	72	92	91	112	438	57%

Capacity =

710



# DIRECTIVE FOR ACTION

TO: THE BOARD OF TRUSTEES

FROM: THE SUPERINTENDENT OF SCHOOLS

## Receiving Schools:

Miford	K	1	2	3	4	5	6	7	8	TOTAL	FTE Utilization	Utilization with 600 capacity
2020	37	41	48	38	33	31	92	105	90	515	77.7%	
2021	46	46	46	52	39	90	102	99	102	622	93.1%	
<b>2022</b>	<b>45</b>	<b>46</b>	<b>46</b>	<b>46</b>	<b>52</b>	<b>111</b>	<b>89</b>	<b>102</b>	<b>102</b>	<b>639</b>	95.7%	106.1%
2023	45	45	46	46	46	110	109	114	98	659	98.7%	109.4%
2024	45	45	45	46	46	126	142	109	115	719	107.7%	119.4%
2025	45	45	45	45	46	113	136	122	117	714	107.0%	118.6%
2026	45	45	45	45	45	126	113	136	122	722	108.2%	119.9%
Design Capacity =		<b>665</b>	(365+12 portables)									

Northcott Prairie School											Prov Util
	K	1	2	3	4	5	6	7	8	Total	
2019	59	34	45	29	38	34	75			314	
2020	66	73	40	61	46	59	123	82		550	65%
2021	74	85	79	44	71	51	125	127	87	743	91%
<b>2022</b>	<b>79</b>	<b>83</b>	<b>90</b>	<b>85</b>	<b>52</b>	<b>76</b>	<b>133</b>	<b>136</b>	<b>136</b>	<b>870</b>	105%
2023	107	90	88	95	90	57	153	133	136	949	113%
2024	110	103	95	93	100	95	135	153	133	1017	122%
2025	110	96	108	100	98	105	167	135	153	1072	129%
2026	110	100	101	113	105	103	170	167	135	1104	133%
Capacity =	800										

George McDougall	9	10	11	12	TOTAL	Utilization
2020	175	210	172	181	738	78%
2021	269	194	202	168	833	88%
<b>2022</b>	<b>282</b>	<b>305</b>	<b>197</b>	<b>199</b>	<b>983</b>	104%
2023	261	321	309	194	1084	115%
2024	237	297	326	303	1164	123%
2025	282	271	302	321	1175	125%
2026	270	324	275	297	1165	123%
Capacity =	944					

Fireside School											Utilization
	K	1	2	3	4	5	6	7	8	TOTAL	Utilization
2019	88	92	89	70	63	52	68	64	42	628	73%
2020	84	94	79	84	64	62	55	68	63	653	76%
2021	99	113	104	95	96	83	67	65	66	788	92%
<b>2022</b>	<b>104</b>	<b>106</b>	<b>107</b>	<b>105</b>	<b>95</b>	<b>96</b>	<b>83</b>	<b>67</b>	<b>68</b>	<b>831</b>	97%
2023	92	99	109	110	108	98	99	86	70	870	103%
2024	85	99	104	114	115	113	103	104	82	918	109%
2025	90	95	104	109	119	120	118	108	109	972	116%
2026	90	95	100	109	114	124	125	123	113	993	118%
Capacity =	800										

# DIRECTIVE FOR ACTION



TO: THE BOARD OF TRUSTEES

FROM: THE SUPERINTENDENT OF SCHOOLS

---

**Item:** Change to the School Calendar for the 2022 – 2023 School Year

**Date of Meeting:** March 24, 2022

## **Background:**

The development of a school calendar in Rocky View Schools is guided by Administrative Procedure 130. The calendar development process is meant to provide a consistent and practical process to build annual operating calendars that both supports the vision and direction of the Division in the provision of high-quality learning for students and also honours the greater community by providing opportunities for feedback. Our calendar has enabled the structures that are necessary to support continuous professional learning to exist in RVS, and we see staff responding positively to those opportunities. The calendar must also address regulatory requirements.

## **Current Status:**

- The calendar for 2022-2023 school year was approved by the Board of Trustees at the June 3, 2021 Board Meeting.
- Since the approval of the 2022-2023 calendar, the Canadian Government proclaimed September 30<sup>th</sup> as a federal statutory holiday for National Day for Truth and Reconciliation. The statutory holiday is to honour Survivors, their families, and communities, and ensure that public commemoration of the history and legacy of residential schools remains a vital component of the reconciliation process.
- A review of what other school divisions in the province have planned for September 30, 2022 found all but 12 school divisions (of which one is Rocky View Schools) have September 30<sup>th</sup> as a holiday, and ten of the twelve school divisions have plans for their Board of Trustees to review their 2022-2023 school year calendar for a potential calendar change.
- A request has been received from the Chief Electoral Office of Elections Alberta that Monday, May 29, 2023 become a non-instructional day as that is the date of the next general provincial election. Elections Alberta is making this request in response to concerns they have received from school boards, school and system staff and parents across the province. Concerns revolve around student safety and security when members of the general public enter and leave a school building with little or no supervision.
- In order to support the request from Elections Alberta, the Professional Learning Day scheduled for Friday, May 19, 2023 could be moved to Monday, May 29, 2023. This would allow access to school buildings as voting stations without students being present. The potential concern would be that the Victoria Day long weekend in RVS has historically been a four-day weekend for families.



# DIRECTIVE FOR ACTION

TO: THE BOARD OF TRUSTEES

FROM: THE SUPERINTENDENT OF SCHOOLS

---

## **Alternatives:**

### **Alternative I:**

The Board of Trustees approves the changes for the 2022 – 2023 school year calendar in draft calendar 1 as presented by administration and directs the Superintendent of Schools to distribute the changed calendar to Rocky View Schools stakeholders.

### **Alternative II:**

The Board of Trustees approves the changes for the 2022 – 2023 school year calendar in draft calendar 2 as presented by administration and directs the Superintendent of Schools to distribute the changed calendar to Rocky View Schools stakeholders.

### **Alternative III:**

The Board of Trustees leaves the 2022 – 2023 school year calendar as previously approved.

### **Recommendation:**

The Board of Trustees approves the changes for the 2022 – 2023 school year calendar in draft calendar 2 as presented by administration and directs the Superintendent of Schools to distribute the changed calendar to Rocky View Schools stakeholders.





# 2022- 2023

## School Year Calendar

Approved June 3, 2021

August 29,31	Organizational Day (No Classes)
August 30	Professional Learning Day (No Classes)
September 1	First Day of Classes
September 5	Labour Day (No Classes)
October 7	Professional Learning Day (No Classes)
October 10	Thanksgiving Day (No Classes)
November 11	Remembrance Day (No Classes)
November 14	Professional Learning Day (No Classes)
December 5	Professional Learning Day (No Classes)
December 22	Last Day of classes before Winter Vacation
January 9	Classes Resume
January 30	Professional Learning Day (No Classes)
January 31	First Day of Classes - Semester 2 (High School)
February 20	Family Day (No Classes)
February 21, 22	Vacation (No Classes)
February 23	Teachers' Convention (No Classes)
February 24	Teachers' Convention (No Classes)
March 17	Professional Learning Day (No Classes)
March 20	Professional Learning Day (No Classes)
April 6	Last Day of Classes before Spring Vacation
April 7	Good Friday (No Classes)
April 10	Easter Monday (No Classes)
April 17	Classes Resume
May 19	Professional Learning Day (No Classes)
May 22	Victoria Day (No Classes)
June 27	Last Day of Classes
June 28	Organizational Day
June 29	Organizational Day

### LEGEND

	School Days
	Holiday (No Classes)
	Professional Learning Day (No Classes)
	Organizational Day (No Classes)
	Teachers' Convention (No Classes)
	Vacation (No Classes)

August 2022						
S	M	T	W	T	F	S
	1	2	3	4	5	6
7	8	9	10	11	12	13
14	15	16	17	18	19	20
21	22	23	24	25	26	27
28	29	30	31			

February 2023						
S	M	T	W	T	F	S
			1	2	3	4
5	6	7	8	9	10	11
12	13	14	15	16	17	18
19	20	21	22	23	24	25
26	27	28				

September 2022						
S	M	T	W	T	F	S
				1	2	3
4	5	6	7	8	9	10
11	12	13	14	15	16	17
18	19	20	21	22	23	24
25	26	27	28	29	30	

March 2023						
S	M	T	W	T	F	S
			1	2	3	4
5	6	7	8	9	10	11
12	13	14	15	16	17	18
19	20	21	22	23	24	25
26	27	28	29	30	31	

October 2022						
S	M	T	W	T	F	S
						1
2	3	4	5	6	7	8
9	10	11	12	13	14	15
16	17	18	19	20	21	22
23	24	25	26	27	28	29
30	31					

April 2023						
S	M	T	W	T	F	S
						1
2	3	4	5	6	7	8
9	10	11	12	13	14	15
16	17	18	19	20	21	22
23	24	25	26	27	28	29
30						

November 2022						
S	M	T	W	T	F	S
		1	2	3	4	5
6	7	8	9	10	11	12
13	14	15	16	17	18	19
20	21	22	23	24	25	26
27	28	29	30			

May 2023						
S	M	T	W	T	F	S
	1	2	3	4	5	6
7	8	9	10	11	12	13
14	15	16	17	18	19	20
21	22	23	24	25	26	27
28	29	30	31			

December 2022						
S	M	T	W	T	F	S
				1	2	3
4	5	6	7	8	9	10
11	12	13	14	15	16	17
18	19	20	21	22	23	24
25	26	27	28	29	30	31

June 2023						
S	M	T	W	T	F	S
				1	2	3
4	5	6	7	8	9	10
11	12	13	14	15	16	17
18	19	20	21	22	23	24
25	26	27	28	29	30	

January 2023						
S	M	T	W	T	F	S
1	2	3	4	5	6	7
8	9	10	11	12	13	14
15	16	17	18	19	20	21
22	23	24	25	26	27	28
29	30	31				

July 2023						
S	M	T	W	T	F	S
						1
2	3	4	5	6	7	8
9	10	11	12	13	14	15
16	17	18	19	20	21	22
23	24	25	26	27	28	29
30	31					

August 29, 31	Organizational Day (No Classes)
August 30	Professional Learning Day (No Classes)
September 1	First Day of Classes
September 5	Labour Day (No Classes)
October 7	Professional Learning Day (No Classes)
October 10	Thanksgiving Day (No Classes)
November 11	Remembrance Day (No Classes)
November 14	Professional Learning Day (No Classes)
December 5	Professional Learning Day (No Classes)
December 22	Last Day of Classes before Winter Vacation
January 9	Classes Resume
January 30	Professional Learning Day (No Classes)
January 31	First Day of Classes - Semester 2 (High School)
February 20	Family Day (No Classes)
February 21	Vacation (No Classes)
February 22	Vacation (No Classes)
February 23	Teachers' Convention (No Classes)
February 24	Teachers' Convention (No Classes)
March 17	Professional Learning Day (No Classes)
March 20	Professional Learning Day (No Classes)
April 6	Last Day of Classes before Spring Vacation
April 7	Good Friday (No Classes)
April 17	Classes Resume
May 19	Professional Learning Day (No Classes)
May 22	Victoria Day (No Classes)
June 27	Last Day of Classes
June 28	Organizational Day (No Classes)
June 29	Organizational Day (No Classes)

**Number of Days**

Semester 1	Operational Days	Instructional Days
August	3	0
September	21	21
October	20	19
November	21	20
December	16	15
January	16	15
<b>Total Semester 1</b>	<b>97</b>	<b>90</b>
Semester 2	Operational Days	Instructional Days
January	1	1
February	17	15
March	23	21
April	14	14
May	22	21
June	21	19
<b>Total Semester 2</b>	<b>98</b>	<b>91</b>
<b>Total Number of Days</b>	<b>195</b>	<b>181</b>



# 2022- 2023

## School Year Calendar

**DRAFT 1**

August 29,31	Organizational Day (No Classes)
August 30	Professional Learning Day (No Classes)
September 1	First Day of Classes
September 5	Labour Day (No Classes)
September 30	National Day for Truth and Reconciliation (No Classes)
October 7	Professional Learning Day (No Classes)
October 10	Thanksgiving Day (No Classes)
November 11	Remembrance Day (No Classes)
November 14	Professional Learning Day (No Classes)
December 5	Professional Learning Day (No Classes)
December 22	Last Day of classes before Winter Vacation
January 9	Classes Resume
January 30	Professional Learning Day (No Classes)
January 31	First Day of Classes - Semester 2 (High School)
February 20	Family Day (No Classes)
February 21, 22	Vacation (No Classes)
February 23	Teachers' Convention (No Classes)
February 24	Teachers' Convention (No Classes)
March 17	Professional Learning Day (No Classes)
March 20	Professional Learning Day (No Classes)
April 6	Last Day of Classes before Spring Vacation
April 7	Good Friday (No Classes)
April 10	Easter Monday (No Classes)
April 17	Classes Resume
May 22	Victoria Day (No Classes)
May 29	Professional Learning Day (No Classes)
June 27	Last Day of Classes
June 28	Organizational Day
June 29	Organizational Day

**LEGEND**

	School Days
	Holiday (No Classes)
	Professional Learning Day (No Classes)
	Organizational Day (No Classes)
	Teachers' Convention (No Classes)
	Vacation (No Classes)

August 2022						
S	M	T	W	T	F	S
	1	2	3	4	5	6
7	8	9	10	11	12	13
14	15	16	17	18	19	20
21	22	23	24	25	26	27
28	29	30	31			

September 2022						
S	M	T	W	T	F	S
				1	2	3
4	5	6	7	8	9	10
11	12	13	14	15	16	17
18	19	20	21	22	23	24
25	26	27	28	29	30	

October 2022						
S	M	T	W	T	F	S
						1
2	3	4	5	6	7	8
9	10	11	12	13	14	15
16	17	18	19	20	21	22
23	24	25	26	27	28	29
30	31					

November 2022						
S	M	T	W	T	F	S
		1	2	3	4	5
6	7	8	9	10	11	12
13	14	15	16	17	18	19
20	21	22	23	24	25	26
27	28	29	30			

December 2022						
S	M	T	W	T	F	S
				1	2	3
4	5	6	7	8	9	10
11	12	13	14	15	16	17
18	19	20	21	22	23	24
25	26	27	28	29	30	31

January 2023						
S	M	T	W	T	F	S
1	2	3	4	5	6	7
8	9	10	11	12	13	14
15	16	17	18	19	20	21
22	23	24	25	26	27	28
29	30	31				

February 2023						
S	M	T	W	T	F	S
			1	2	3	4
5	6	7	8	9	10	11
12	13	14	15	16	17	18
19	20	21	22	23	24	25
26	27	28				

March 2023						
S	M	T	W	T	F	S
			1	2	3	4
5	6	7	8	9	10	11
12	13	14	15	16	17	18
19	20	21	22	23	24	25
26	27	28	29	30	31	

April 2023						
S	M	T	W	T	F	S
						1
2	3	4	5	6	7	8
9	10	11	12	13	14	15
16	17	18	19	20	21	22
23	24	25	26	27	28	29
30						

May 2023						
S	M	T	W	T	F	S
	1	2	3	4	5	6
7	8	9	10	11	12	13
14	15	16	17	18	19	20
21	22	23	24	25	26	27
28	29	30	31			

June 2023						
S	M	T	W	T	F	S
				1	2	3
4	5	6	7	8	9	10
11	12	13	14	15	16	17
18	19	20	21	22	23	24
25	26	27	28	29	30	

July 2023						
S	M	T	W	T	F	S
						1
2	3	4	5	6	7	8
9	10	11	12	13	14	15
16	17	18	19	20	21	22
23	24	25	26	27	28	29
30	31					

<b>August 29, 31</b>	<b>Organizational Day (No Classes)</b>
<b>August 30</b>	<b>Professional Learning Day (No Classes)</b>
<b>September 1</b>	<b>First Day of Classes</b>
<b>September 5</b>	<b>Labour Day (No Classes)</b>
<b>September 30</b>	<b>National Day for Truth and Reconciliation</b>
<b>October 7</b>	<b>Professional Learning Day (No Classes)</b>
<b>October 10</b>	<b>Thanksgiving Day (No Classes)</b>
<b>November 11</b>	<b>Remembrance Day (No Classes)</b>
<b>November 14</b>	<b>Professional Learning Day (No Classes)</b>
<b>December 5</b>	<b>Professional Learning Day (No Classes)</b>
<b>December 22</b>	<b>Last Day of Classes before Winter Vacation</b>
<b>January 9</b>	<b>Classes Resume</b>
<b>January 30</b>	<b>Professional Learning Day (No Classes)</b>
<b>January 31</b>	<b>First Day of Classes - Semester 2 (High School)</b>
<b>February 20</b>	<b>Family Day (No Classes)</b>
<b>February 21</b>	<b>Vacation (No Classes)</b>
<b>February 22</b>	<b>Vacation (No Classes)</b>
<b>February 23</b>	<b>Teachers' Convention (No Classes)</b>
<b>February 24</b>	<b>Teachers' Convention (No Classes)</b>
<b>March 17</b>	<b>Professional Learning Day (No Classes)</b>
<b>March 20</b>	<b>Professional Learning Day (No Classes)</b>
<b>April 6</b>	<b>Last Day of Classes before Spring Vacation</b>
<b>April 7</b>	<b>Good Friday (No Classes)</b>
<b>April 17</b>	<b>Classes Resume</b>
<b>May 22</b>	<b>Victoria Day (No Classes)</b>
<b>May 29</b>	<b>Professional Learning Day (No Classes)</b>
<b>June 27</b>	<b>Last Day of Classes</b>
<b>June 28</b>	<b>Organizational Day (No Classes)</b>
<b>June 29</b>	<b>Organizational Day (No Classes)</b>

**Number of Days**

<b>Semester 1</b>	<b>Operational Days</b>	<b>Instructional Days</b>
<b>August</b>	<b>3</b>	<b>0</b>
<b>September</b>	<b>20</b>	<b>20</b>
<b>October</b>	<b>20</b>	<b>19</b>
<b>November</b>	<b>21</b>	<b>20</b>
<b>December</b>	<b>16</b>	<b>15</b>
<b>January</b>	<b>16</b>	<b>15</b>
<b>Total Semester 1</b>	<b>96</b>	<b>89</b>
<b>Semester 2</b>		
<b>Semester 2</b>	<b>Operational Days</b>	<b>Instructional Days</b>
<b>January</b>	<b>1</b>	<b>1</b>
<b>February</b>	<b>17</b>	<b>15</b>
<b>March</b>	<b>23</b>	<b>21</b>
<b>April</b>	<b>14</b>	<b>14</b>
<b>May</b>	<b>22</b>	<b>21</b>
<b>June</b>	<b>21</b>	<b>19</b>
<b>Total Semester 2</b>	<b>98</b>	<b>91</b>
<b>Total Number of Days</b>	<b>194</b>	<b>180</b>



# 2022- 2023

## School Year Calendar

**DRAFT 2**

August 29,31	Organizational Day (No Classes)
August 30	Professional Learning Day (No Classes)
September 1	First Day of Classes
September 5	Labour Day (No Classes)
September 30	National Day for Truth and Reconciliation
October 7	Professional Learning Day (No Classes)
October 10	Thanksgiving Day (No Classes)
November 11	Remembrance Day (No Classes)
November 14	Professional Learning Day (No Classes)
December 5	Professional Learning Day (No Classes)
December 22	Last Day of classes before Winter Vacation
January 9	Classes Resume
January 30	Professional Learning Day (No Classes)
January 31	First Day of Classes - Semester 2 (High School)
February 20	Family Day (No Classes)
February 21, 22	Vacation (No Classes)
February 23	Teachers' Convention (No Classes)
February 24	Teachers' Convention (No Classes)
March 17	Professional Learning Day (No Classes)
March 20	Professional Learning Day (No Classes)
April 6	Last Day of Classes before Spring Vacation
April 7	Good Friday (No Classes)
April 10	Easter Monday (No Classes)
April 17	Classes Resume
May 19	Professional Learning Day (No Classes)
May 22	Victoria Day (No Classes)
June 27	Last Day of Classes
June 28	Organizational Day
June 29	Organizational Day

**LEGEND**

	School Days
	Holiday (No Classes)
	Professional Learning Day (No Classes)
	Organizational Day (No Classes)
	Teachers' Convention (No Classes)
	Vacation (No Classes)

August 2022						
S	M	T	W	T	F	S
	1	2	3	4	5	6
7	8	9	10	11	12	13
14	15	16	17	18	19	20
21	22	23	24	25	26	27
28	29	30	31			

February 2023						
S	M	T	W	T	F	S
			1	2	3	4
5	6	7	8	9	10	11
12	13	14	15	16	17	18
19	20	21	22	23	24	25
26	27	28				

September 2022						
S	M	T	W	T	F	S
				1	2	3
4	5	6	7	8	9	10
11	12	13	14	15	16	17
18	19	20	21	22	23	24
25	26	27	28	29	30	

March 2023						
S	M	T	W	T	F	S
			1	2	3	4
5	6	7	8	9	10	11
12	13	14	15	16	17	18
19	20	21	22	23	24	25
26	27	28	29	30	31	

October 2022						
S	M	T	W	T	F	S
						1
2	3	4	5	6	7	8
9	10	11	12	13	14	15
16	17	18	19	20	21	22
23	24	25	26	27	28	29
30	31					

April 2023						
S	M	T	W	T	F	S
						1
2	3	4	5	6	7	8
9	10	11	12	13	14	15
16	17	18	19	20	21	22
23	24	25	26	27	28	29
30						

November 2022						
S	M	T	W	T	F	S
		1	2	3	4	5
6	7	8	9	10	11	12
13	14	15	16	17	18	19
20	21	22	23	24	25	26
27	28	29	30			

May 2023						
S	M	T	W	T	F	S
	1	2	3	4	5	6
7	8	9	10	11	12	13
14	15	16	17	18	19	20
21	22	23	24	25	26	27
28	29	30	31			

December 2022						
S	M	T	W	T	F	S
				1	2	3
4	5	6	7	8	9	10
11	12	13	14	15	16	17
18	19	20	21	22	23	24
25	26	27	28	29	30	31

June 2023						
S	M	T	W	T	F	S
				1	2	3
4	5	6	7	8	9	10
11	12	13	14	15	16	17
18	19	20	21	22	23	24
25	26	27	28	29	30	

January 2023						
S	M	T	W	T	F	S
1	2	3	4	5	6	7
8	9	10	11	12	13	14
15	16	17	18	19	20	21
22	23	24	25	26	27	28
29	30	31				

July 2023						
S	M	T	W	T	F	S
						1
2	3	4	5	6	7	8
9	10	11	12	13	14	15
16	17	18	19	20	21	22
23	24	25	26	27	28	29
30	31					

<b>August 29, 31</b>	<b>Organizational Day (No Classes)</b>
<b>August 30</b>	<b>Professional Learning Day (No Classes)</b>
<b>September 1</b>	<b>First Day of Classes</b>
<b>September 5</b>	<b>Labour Day (No Classes)</b>
<b>September 30</b>	<b>National Day for Truth and Reconciliation</b>
<b>October 7</b>	<b>Professional Learning Day (No Classes)</b>
<b>October 10</b>	<b>Thanksgiving Day (No Classes)</b>
<b>November 11</b>	<b>Remembrance Day (No Classes)</b>
<b>November 14</b>	<b>Professional Learning Day (No Classes)</b>
<b>December 5</b>	<b>Professional Learning Day (No Classes)</b>
<b>December 22</b>	<b>Last Day of Classes before Winter Vacation</b>
<b>January 9</b>	<b>Classes Resume</b>
<b>January 30</b>	<b>Professional Learning Day (No Classes)</b>
<b>January 31</b>	<b>First Day of Classes - Semester 2 (High School)</b>
<b>February 20</b>	<b>Family Day (No Classes)</b>
<b>February 21</b>	<b>Vacation (No Classes)</b>
<b>February 22</b>	<b>Vacation (No Classes)</b>
<b>February 23</b>	<b>Teachers' Convention (No Classes)</b>
<b>February 24</b>	<b>Teachers' Convention (No Classes)</b>
<b>March 17</b>	<b>Professional Learning Day (No Classes)</b>
<b>March 20</b>	<b>Professional Learning Day (No Classes)</b>
<b>April 6</b>	<b>Last Day of Classes before Spring Vacation</b>
<b>April 7</b>	<b>Good Friday (No Classes)</b>
<b>April 17</b>	<b>Classes Resume</b>
<b>May 19</b>	<b>Professional Learning Day (No Classes)</b>
<b>May 22</b>	<b>Victoria Day (No Classes)</b>
<b>June 27</b>	<b>Last Day of Classes</b>
<b>June 28</b>	<b>Organizational Day (No Classes)</b>
<b>June 29</b>	<b>Organizational Day (No Classes)</b>

**Number of Days**

<b>Semester 1</b>	<b>Operational Days</b>	<b>Instructional Days</b>
<b>August</b>	<b>3</b>	<b>0</b>
<b>September</b>	<b>20</b>	<b>20</b>
<b>October</b>	<b>20</b>	<b>19</b>
<b>November</b>	<b>21</b>	<b>20</b>
<b>December</b>	<b>16</b>	<b>15</b>
<b>January</b>	<b>16</b>	<b>15</b>
<b>Total Semester 1</b>	<b>96</b>	<b>89</b>
<b>Semester 2</b>		
<b>Semester 2</b>	<b>Operational Days</b>	<b>Instructional Days</b>
<b>January</b>	<b>1</b>	<b>1</b>
<b>February</b>	<b>17</b>	<b>15</b>
<b>March</b>	<b>23</b>	<b>21</b>
<b>April</b>	<b>14</b>	<b>14</b>
<b>May</b>	<b>22</b>	<b>21</b>
<b>June</b>	<b>21</b>	<b>19</b>
<b>Total Semester 2</b>	<b>98</b>	<b>91</b>
<b>Total Number of Days</b>	<b>194</b>	<b>180</b>

# INFORMATION ITEM



TO: THE BOARD OF TRUSTEES

FROM: RVS EDWIN PARR SELECTION COMMITTEE

---

**Date of Meeting:** March 24, 2022

**Item:** 2022 Edwin Parr Award Nomination, Zone 5

## **Background:**

Each year Rocky View Schools initiates a process to nominate a first-year teacher to receive the Alberta School Boards Association Edwin Parr Award.

Edwin Parr homesteaded in the Meanook area near Athabasca in 1920. Prior to 1925 he began his long career in educational affairs as a member of the George Lake School District Board. He served as Chair of the Board with the Athabasca School Division and was on the council of the County of Athabasca from its formation in 1959 until his death in January 1963. Edwin Parr was President of the Alberta School Trustees' Association from 1956 to 1962. "Ed Parr", as he was known to all, instituted an Annual Teacher Award in his school system. Each year a member of the teaching staff was chosen to receive a gold watch and an appropriate certificate for long and meritorious service. To honor his memory and to honor the profession he so dearly respected, the Alberta School Trustee's Association (now ASBA) established the Edwin Parr Teacher Award in 1964.

## **Criteria:**

- Any first-year K-12 teacher is eligible for nomination.
- A minimum of 100 full-time equivalent days of teaching within the current school year is required (i.e., September 2021 to June 2022).
- A teacher may have up to 120 full-time equivalent days of teaching service prior to signing a full-time contract.
- A teacher must hold an Interim Professional Certificate or other valid Alberta teaching authority.
- First year teaching experience must be completed in Alberta from a school jurisdiction that is a member of the ASBA.

## **The Candidate: Maureen McCann**

Maureen goes above and beyond to make connections with her students, parents, and colleagues. Maureen sees every student as an individual. Using various means of connecting, such as side conversations, sharing circles, extra-curricular clubs, having lunch in the classroom, and learning TouchChat; she strives to find out what is individually important to her students. Maureen believes that by finding each student's passion she can connect the learning and gain valuable background knowledge and insight into her student's behaviour and learning.

Maureen firmly believes that students first and foremost need to be socially and emotionally supported before academics can be taught. Maureen has a few students in her class who struggle with mental health complexities. She has worked so hard building trust with these students; to make sure that they know she always has their back. Maureen will often say she cares first about the person her students are and the learning will follow if they feel safe, secure, and confident in her class. Maureen is so mature for a first-year teacher, taking on any advice very willingly.



# COMMITTEE REPORT

TO: THE BOARD OF TRUSTEES

FROM: THE SCHOOL COUNCILS COMMITTEE

---

**Date:** March 24<sup>th</sup>, 2022

## **Committee Members:**

Norma Lang  
Shelley Kinley  
Fiona Gilbert  
Melyssa Bowen (Committee Chair)

## **Key Meeting Points:**

- Joint Board School Council Meeting was hosted on March 10<sup>th</sup>, 2022.
- Attendees heard updates from Superintendent Luterbach and Chair Gilbert, as well a presentation led by Bob Wilkie from I Got Mind.
- Shared information on upcoming ASCA AGM & Conference April 24<sup>th</sup>-26<sup>th</sup>, including that The Board of Trustees is supporting individuals to attend and that the Resolutions Package is available for School Councils to review.

## **Future Considerations:**

- RVS Application to attend the ASCA AGM & Conference will close on April 1<sup>st</sup> and the committee looks forward to reviewing and sending as many school councils as we can within our budget.

## **Committee Recommendation(s):**

- Committee encourages trustees to keep sharing ASCA information at school council meetings over the next month.





# DIRECTIVE FOR ACTION

TO: THE BOARD OF TRUSTEES

FROM: THE TRANSPORTATION COMMITTEE

---

**Item:** Transportation Exception Routes

**Date of Meeting:** March 24, 2022

**Background:**

Rocky View Schools operates exception routes for transportation. These routes help maintain the student population of smaller schools.

As Indus School has a small overall population, maintaining the student population allows the school to offer programming that might not be possible without the additional students. To take advantage of smaller class sizes, and a small school atmosphere, students residing in the Hamlet of Langdon have, in previous years, applied through the out of area application to attend Indus School. The Board has supported these requests in previous years by approving a transportation route exception from Langdon to Indus School.

The Board has historically supported these requests as a way to support smaller school communities and parent choice. Parents/guardians are still required to pay transportation fees to access to these routes.

**Current Status:**

The Indus exemption route is still in use. Attached in Appendix A is a map and specifics on the current utilization of the route. The route timing and stop locations may vary slightly year over year. The school principal, and RVS Administration, are requesting that the route continue for the next two years.

As approval to operate these routes expires as of June 30, 2022, the Transportation Committee is recommending that these routes be extended for an additional two years.

**Alternatives**

**Alternative 1**

The Board of Trustees approves the transportation route exception from Langdon to Indus School for the 2022/23 and 2023/24 school years.

**Alternative 2**

The Board of Trustees approves the transportation route exception from Langdon to Indus School for the 2022/23 school year.

**Recommendation:**

The Board of Trustees approves the transportation route exception from Langdon to Indus School for the 2022/23 and 2023/24 school years.



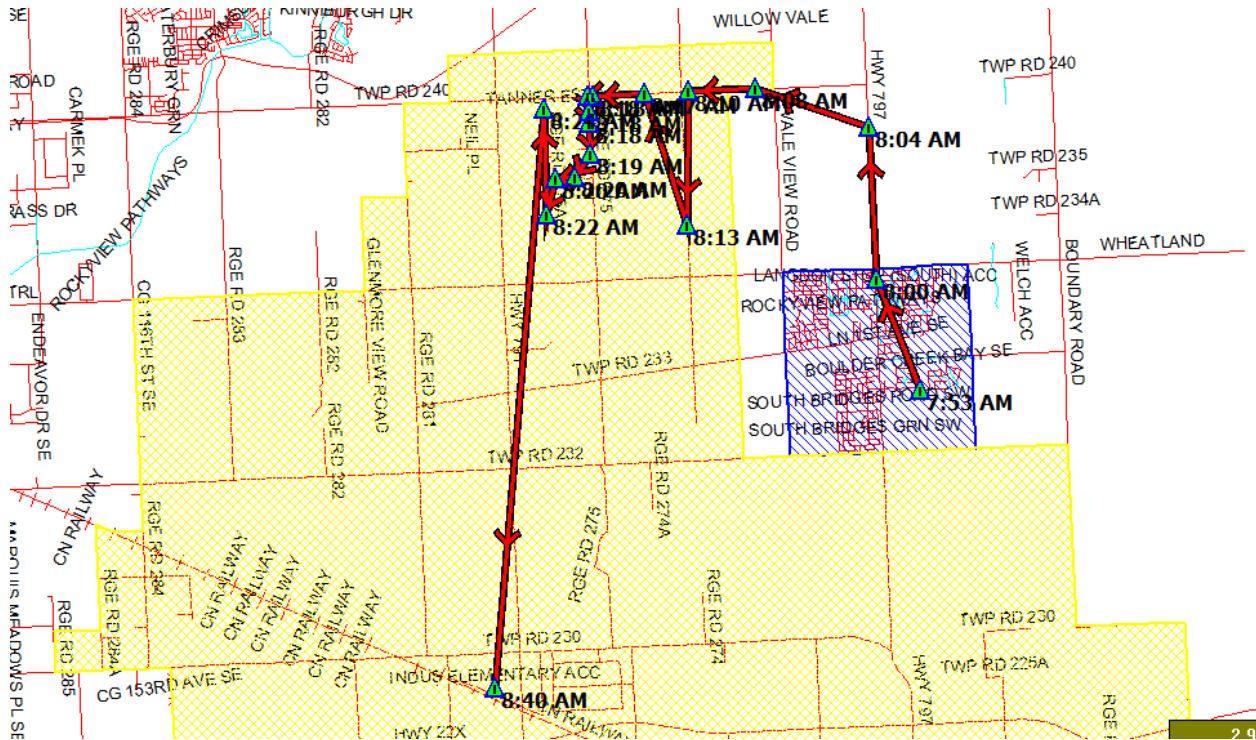
# DIRECTIVE FOR ACTION

TO: THE BOARD OF TRUSTEES

FROM: THE TRANSPORTATION COMMITTEE

## Appendix A - Indus Exception Boundary

9 students are riding from 2 stops inside the Indus Exception Boundary on 1 bus route. Adding 5.50 km's to the bus route each trip (11 km's per day). Of the 9 students, 1 is in Grade 9, 3 are in Grade 7, 1 is in Grade 6, 1 is in Grade 5, 1 is in Grade 4, 1 is in Grade 3 and 1 is in Grade 2.





# DIRECTIVE FOR ACTION

TO: THE BOARD OF TRUSTEES

FROM: THE TRANSPORTATION COMMITTEE

---

**Item:** Transportation Exception Routes

**Date of Meeting:** March 24, 2022

**Background:**

Rocky View Schools operates exception routes for transportation. These routes help maintain the student population of smaller schools.

As Westbrook School has a small overall population, maintaining the student population allows the school to offer programming that might not be possible without the additional students. To take advantage of smaller class sizes, and a small school atmosphere, students residing in the Town of Cochrane have, in previous years, applied as out of areas students to Westbrook School. The Board has supported these requests by approving a transportation route exception in past years. A single stop has been provided in Cochrane where the Town of Cochrane students are picked up and then transported to Westbrook School.

The Board has historically supported these requests as a way to support smaller school communities and parent choice. Parents/guardians are still required to pay transportation fees to access to these routes.

**Current Status:**

The Westbrook School exemption route is still in use. Attached in Appendix A is a map and specifics on the current utilization of the route. The route timing and stop locations may vary slightly year over year. The school principal, and RVS Administration, are requesting that the route continue for the next two years.

As approval to operate these routes expires as of June 30, 2022, the Transportation Committee is recommending that these routes be extended for an additional two years.

**Alternatives**

**Alternative 1**

The Board of Trustees approves the transportation route exception from Cochrane to Westbrook School for the 2022/23 and 2023/24 school years.

**Alternative 2**

The Board of Trustees approves the transportation route exception from Cochrane to Westbrook School for the 2022/23 school year.

**Recommendation:**

The Board of Trustees approves the transportation route exception from Cochrane to Westbrook School for the 2022/23 and 2023/24 school years.



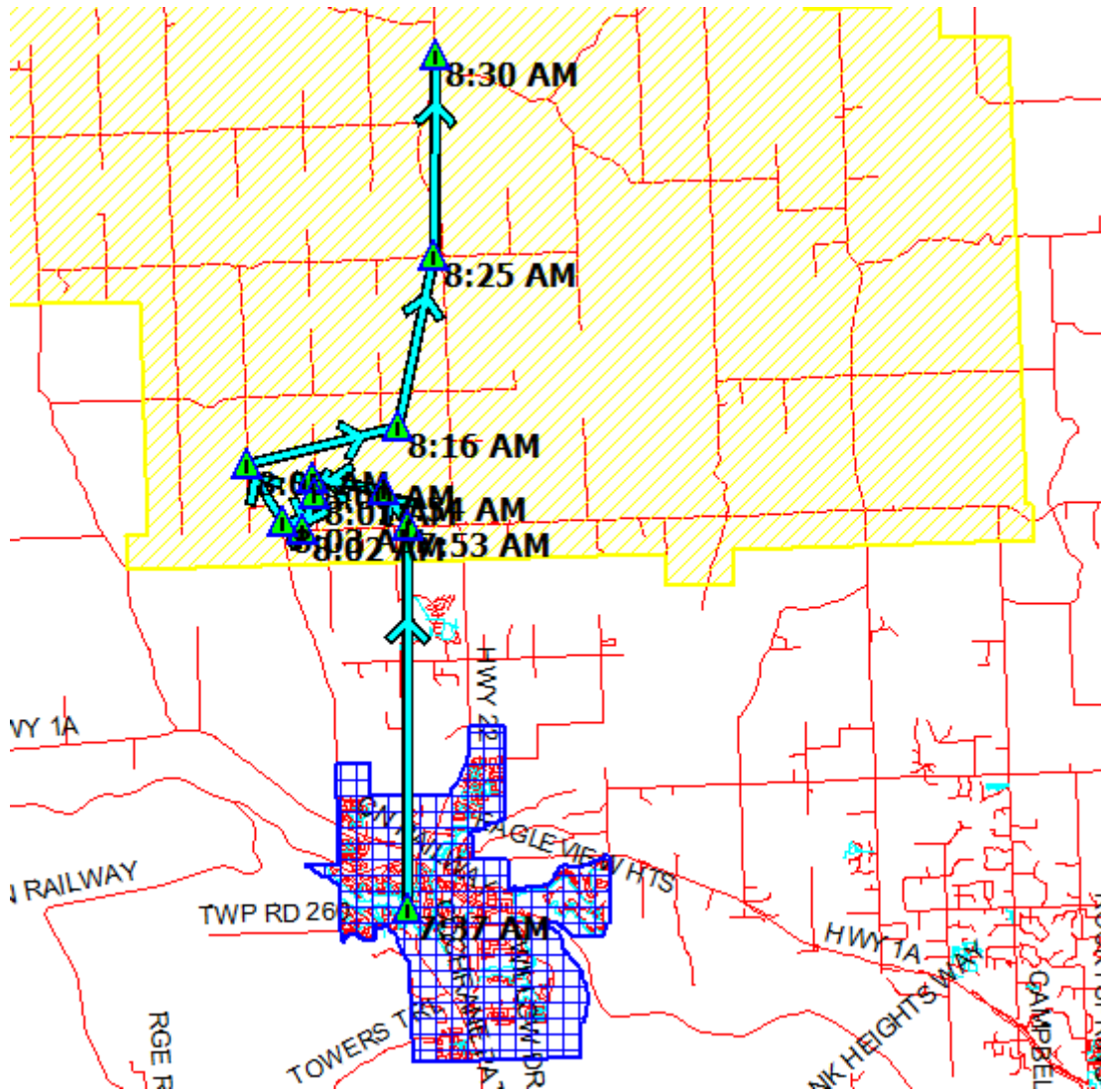
# DIRECTIVE FOR ACTION

TO: THE BOARD OF TRUSTEES

FROM: THE TRANSPORTATION COMMITTEE

## Appendix A - Westbrook Exception Boundary

8 students are riding from 1 stops inside the Westbrook Exception Boundary on 1 bus route. Adding 11 km's to the bus route each trip (22 km's per day). Of the 8 students 2 are in Grade 8 and (will be at high school next year), 2 are in grade 6, 1 is in Grade 4, 1 is in Grade 1 and 2 are in Kindergarten.





# DIRECTIVE FOR ACTION

TO: THE BOARD OF TRUSTEES

FROM: THE TRANSPORTATION COMMITTEE

---

**Item:**                    **Transportation Exception Routes**

**Date of Meeting:**    **March 24, 2022**

**Background:**

Rocky View Schools operates exception routes for transportation. These routes help maintain the student population of smaller schools.

As Kathryn School has a small overall population, maintaining the student population allows the school to offer programming that might not be possible without the additional students. To take advantage of smaller class sizes, and a small school atmosphere, students residing in Prairie Royal have, in previous years, been allowed to attend either Kathryn School or East Lake School. The Board has supported this attendance option by approving a transportation route exception in past years.

The Board has historically supported these requests as a way to support smaller school communities and parent choice. Parents/guardians are still required to pay transportation fees to access to these routes.

**Current Status:**

The Kathryn School exemption route is still in use. Attached in Appendix A is a map and specifics on the current utilization of the route. The route timing and stop locations may vary slightly year over year. The school principal, and RVS Administration, are requesting that the route continue for the next two years.

As approval to operate these routes expires as of June 30, 2022, the Transportation Committee is recommending that these routes be extended for an additional two years.

**Alternatives**

**Alternative 1**

The Board of Trustees approves the transportation route exception from Prairie Royal to Kathryn School for the 2022/23 and 2023/24 school years.

**Alternative 2**

The Board of Trustees approves the transportation route exception from Prairie Royal to Kathryn School for the 2022/23 school year.

**Recommendation:**

The Board of Trustees approves the transportation route exception from Prairie Royal to Kathryn School for the 2022/23 and 2023/24 school years.





# COMMITTEE REPORT

TO: THE BOARD OF TRUSTEES

FROM: THE BOARD PLANNING COMMITTEE

---

**Report Date:** March 24, 2022

**Committee Members Present:**

All Trustees  
Greg Luterbach, Superintendent  
Larry Paul, Associate Superintendent Business & Ops  
Tara De Weerd, Director of Communications  
Stephanie Dove, Recording Secretary

**Meeting Dates:** March 3, 2022  
March 10, 2022  
March 17, 2022

**Key Meeting Points:**

- Received reports from Advocacy, Student Transportation, Online School Naming, and Labour Relations Committees
- Heard and discussed presentation and proposal from Cochrane Track & Field Association
- High level review of draft 2023-2026 Capital Plan and future enrolment projections
- Discussed Transportation budget and fees for 2022/2023 and uncertainty of increasing transportation costs
- Reviewed current transportation route exceptions and their impact on budget, schools, and programming
- Discussed potential changes to 2022/2023 school calendar to consider National Day for Truth and Reconciliation in September and the Provincial General Election in May.
- Provided feedback on pool process for hiring and placing Principals and the process and timeline for the development of the Board's Strategic Plan

**Future Considerations:**

- RVS re-affirms support for the enhancement of the Cochrane High School football field as presented by Cochrane Track & Field Association

**Committee Recommendation(s):**

- That the following items are brought forward for the Board's consideration:
  - 2023-2026 Capital Plan
  - Transportation Route exceptions for Kathryn, Westbrook and Indus Schools
  - Transportation Fees for 2022/2023 once transportation grant funding has been confirmed for this year
- Administration develops a plan for relocating modular classrooms within RVS to meet emergent enrolment pressures in various schools