



REGULAR MEETING OF THE BOARD OF TRUSTEES

HELD VIRTUALLY

MAY 6, 2021

10:00 a.m. Regular Board Meeting

AGENDA

1. Call to Order
2. Ratification to Proceed with Virtual Meeting
3. Approval of Agenda
4. In Camera Meeting
5. Motions Arising from In Camera
6. Approval of Minutes
 - a) Regular Board Meeting – April 22, 2021
7. Prince of Peace Delegations
 - a) Student Delegation
 - b) Parent Delegation
8. Superintendent's Report
9. Chair's Report/Correspondence
10. Committee Reports
 - a) School Councils
 - b) Planning
 - c) Other
11. Trustee Reports
12. New Business
13. Adjournment

This unofficial agenda is subject to change and is not *official* until approved at the Board meeting.



SUPERINTENDENT'S REPORT
REGULAR MEETING OF THE BOARD OF TRUSTEES

MAY 6, 2021

AGENDA

1. Affirm AP350 Code of Conduct
2. Approval of EC Foyer Reno Funding
3. Elections Boundary Bylaw Revision

ACTION

Directive
Directive
Directive

A handwritten signature in black ink, appearing to read "Greg Luterbach", with a stylized flourish at the end.

Greg Luterbach
Superintendent of Schools

DIRECTIVE FOR ACTION



TO: THE BOARD OF TRUSTEES

FROM: POLICY COMMITTEE

Item: Affirmation of AP350 – Student Code of Conduct

Date of Meeting: May 6, 2021

Background:

In December 2020 administration revised Administrative Procedure AP350 Student Code of Conduct to reflect current practices, align with Positive Behaviour Intervention Supports (PBIS) in our Inclusion Practice Guide, focus on desired behaviours while still listing examples of unacceptable behaviours and consequences, affirm the rights for each student as provided for in the *Alberta Human Rights Act* and the *Canadian Charter of Rights and Freedoms*, and addressed the requirement of the *Alberta Education Act*.

The *Education Act* has specific provisions 33(2 and 3) requiring Boards to have a student code of conduct and that they contain various aspects including that they are reviewed annually.

Current Status:

Administration has reviewed and edited AP350 just this past December and believes the procedure addresses the requirements of the *Education Act*. Administration is not recommending any other additional changes to AP350 at this time.

Alternatives:

Alternative I

The Board of Trustees affirms Administrative Procedure 350 – Student Code of Conduct.

Alternative II

The Board of Trustees directs the Superintendent to revise Administrative Procedure 350 – Student Code of Conduct.

Recommendation:

The Board of Trustees affirms Administrative Procedure 350 – Student Code of Conduct.

Purpose/Background

Rocky View Schools endorses a set of desirable personal and interpersonal character traits that incorporate universal values common to all religions and ethnic-cultural groups, including respect, integrity, empathy, compassion, independence, cooperation, responsibility and self-control. Rocky View Schools affirms the rights of each student enrolled in a school operated by the Board as provided for in the Alberta Human Rights Act and the Charter of Rights and Freedoms.

Students are expected to learn, practice and develop such personal and interpersonal character traits and to contribute to the development of welcoming, caring, respectful and safe learning environments. Students are further expected to respect diversity and refrain from demonstrating any form of discrimination as set out in the Alberta Human Rights Act and the Canadian Charter of Rights and Freedoms. Students are to foster a sense of belonging amongst all students.

Within the aforementioned context, students are expected to pursue academic and cultural studies to maximize their individual potential in becoming self-reliant, responsive and contributing members of society.

Procedures

1. In displaying acceptable behaviour, students are expected to:
 - 1.1 Use their abilities and talents to gain maximum learning benefits from their school experiences;
 - 1.2 Contribute to a climate of mutual trust and respect conducive to effective learning, personal development, and social living;
 - 1.3 Co-operate fully with everyone authorized by the Board to provide education programs and other services;
 - 1.4 Comply with all applicable federal, provincial and municipal laws, and the rules of Rocky View Schools and the school;
 - 1.5 Account to their teachers for their conduct;
 - 1.6 Attend school regularly and punctually;
 - 1.7 Use non-violent means to resolve conflict;
 - 1.8 Treat all other students and staff with dignity, respect and fairness at all times;
 - 1.9 Contribute to a learning environment that is free from physical, emotional, and social abuse;
 - 1.10 Refrain from, report and not tolerate bullying behaviour directed toward others in the school, whether or not it occurs within the school building, during the school day or by electronic means;
 - 1.11 Take appropriate measures to help those in need; and
 - 1.12 Demonstrate honesty and integrity.

2. Students are accountable for demonstrating respect for:
 - 2.1 Authority;
 - 2.2 Others and their property;
 - 2.3 School property, equipment and resources ; and
 - 2.4 Differences in ethnicity, race, religion, gender and sexual orientation.
3. Students are prohibited from engaging in unacceptable behaviour, whether or not it occurs within the school building, on school grounds, off school grounds on an approved school related activity, on the school bus, during the school day or by electronic means.

Examples of such behaviours include, but are not limited to:

- 3.1 Use, possession of, sale, distribution of or active contact with, a weapon on a student's person, in a student's locker or desk, on Rocky View Schools property, or in a vehicle on Rocky View Schools property used by a student or occupied by a student as a passenger;
- 3.2 Threats;
- 3.3 Conduct which endangers others;
- 3.4 Encouraging conduct which endangers or may endanger others;
- 3.5 Encouraging unacceptable conduct;
- 3.6 Use or display of improper, obscene or abusive language;
- 3.7 Distribution or display of offensive messages or pictures;
- 3.8 Theft, including identity theft;
- 3.9 Assault;
- 3.10 Wilful damage to school or others' property;
- 3.11 Use, possession of, distribution of, or active contact with, or collection of money for illicit drugs, cannabis, alcohol, or inhalants in school, on RVS property or in the context of any school-related activity;
- 3.12 Attending school or any school-related activity under the influence of illicit drugs, cannabis, alcohol or inhalants;
- 3.13 Personal, gender identification related or sexual harassment;
- 3.14 Hazing, initiation activities, the formation or the operation of sororities, fraternities, gangs and secret organizations;
- 3.15 Extortion;
- 3.16 Disruptive behaviour, wilful disobedience or defiance of authority;
- 3.17 Interfering with the orderly conduct of classes or the school;
- 3.18 Tampering with fire alarms and safety equipment;
- 3.19 Criminal activity;
- 3.20 Contravention of the school's code of conduct;
- 3.21 School-related violence;
- 3.22 Bullying, including cyber-bullying; and

- 3.23 Inappropriate information technology use.
4. Unacceptable student behaviour:
 - 4.1 May be grounds for disciplinary action; and
 - 4.2 Provides an opportunity for critical learning in the areas of:
 - 4.2.1 Personal accountability and responsibility;
 - 4.2.2 The development of empathy;
 - 4.2.3 Conflict resolution;
 - 4.2.4 Communication; and
 - 4.2.5 Social skills development.
5. When responding to unacceptable student behaviour, the following are to be considered:
 - 5.1 The effect of the student's behaviour upon other students, the staff, the school, and the community;
 - 5.2 The nature of the action or incident that calls for disciplinary or alternative measures;
 - 5.3 The student's previous conduct and previous interventions;
 - 5.4 The student's age, maturity and abilities;
 - 5.5 Supports, whether they be academic or social emotional, required for the student demonstrating inappropriate behaviour as well as supports for the students impacted by the inappropriate behaviour;
 - 5.6 The impact of proposed action on the student's future behaviour;
 - 5.7 The student's learning needs; and
 - 5.8 Any other information considered appropriate or relevant.
6. The consequences of unacceptable behaviour may be:
 - 6.1 Assignment of a student whose behaviour is unacceptable, disruptive or destructive to an alternate supervised location;
 - 6.2 Short term removal of privileges;
 - 6.3 Detention;
 - 6.4 Alternative interventions such as community conferencing or other forms of restorative justice;
 - 6.5 Suspension; and
 - 6.6 Recommendation for expulsion.
7. Students will contribute, to the greatest extent possible, to a learning environment that is well-ordered, peaceful, safe, non-threatening, and conducive to learning and optimal growth.

Reference:

- Education Act Sections 8, 11, 31, 32, 33, 35.1, 36, 37, 52, 53, 196, 197, 222, 257
- Alberta Human Rights Act
- Canadian Charter of Rights and Freedoms
- Criminal Code of Canada

Appendix A – STUDENT CONDUCT ON SCHOOL BUSES

Purpose/Background

Students are to conduct themselves in a safe, reasonable and orderly manner, while being transported on school buses.

Procedures

1. The Director of Transportation shall establish a code of conduct for passengers on school buses. Copies shall be provided to all students, parents, principals and bus operators.
2. A school bus operator shall maintain, under the direction of the Principal, order and discipline among the students while they are being transported to and from school.
3. A school bus operator shall keep a log of student behaviour incidents and action taken, including reporting of same.
4. Students who are school bus passengers shall adhere to the code of conduct.
5. Bus operators must report serious or repeated breaches of conduct in writing to the Principal of the school.
6. The Principal of the school at which the student is in attendance shall address breaches of discipline brought to them in writing by operators. The Principal has the authority and the responsibility to discipline a student who misbehaves while a passenger on a school bus. This may include suspension of the student from riding the bus or from school.
7. Parent/guardian shall be notified by the Principal when a misconduct report has been filed.

Reference:

- Education Act Sections 11, 31, 32, 33, 36, 37, 52, 53, 59, 197, 222 and 257
- Traffic Safety Act
- Student Transportation Regulation 250/98 (Amended AR 125/2005)

DIRECTIVE FOR ACTION



TO: THE BOARD OF TRUSTEES

FROM: THE SUPERINTENDENT OF SCHOOLS

Date of Meeting: May 6, 2021

Item: RVS Education Centre Renovation

Background:

Fourteen years ago, in 2007, Rocky View Schools (RVS) opened the doors to the current Education Centre meeting the administrative and support staff needs of the school district. At that time, there were 37 schools and an enrolment of 15,480 students; since then, RVS enrolment has increased by 10,000 students and increased to 51 schools. To support the additional student population, school-based and central office staff have also increased - additional principals, teachers, secretaries, caretakers, finance, transportation, communications, maintenance, human resources, occupational therapists, learning specialists, psychologists, and so on.

Over these years, rather than building additional area to accommodate for this need of increasing staff, RVS has taken the approach of intensifying the use of existing space in the Education Centre space. And like schools, the education centre has also reflected the changing needs that technology brings, for example, the removal of dedicated computer lab training centres due to use of online professional learning (this occurred prior to pandemic), re-thinking the space in the mill shop due to more contracted cabinet making, introduction of dropdown spaces for staff who are regularly in schools but also need a space to work at the Education Centre.

In recent years, apart from this past year, the number and size of work/meeting spaces in the Education Centre was not meeting the demand of the growing district – more medium-sized meeting spaces are needed for interviews and team meetings and expanded spaces are needed for very large gatherings, such as professional learning sessions for school-based staff and administration leadership meetings. During the pandemic, the need for meeting space decreased due to the necessity of eliminating/reducing in person contact. Certainly, the use of online meetings will continue after the pandemic is over as it is an efficient way to meet, but the desire to meet in person will continue to be required - perhaps stronger then ever.

Current Status:

Prior to the pandemic, work on intensifying the use of the front foyer at the Education Centre had begun. The designs were about eighty percent complete, but like many projects, this one was also put on hold as rightfully more immediate challenges took priority. As approved in June of 2020, two new meeting rooms were created in former lunch spaces to support meeting room needs

By this September, it is anticipated RVS will be able to have in-person meetings for staff, leadership administration, and the Board. And as life in the workplace begins its 'new-normal', this renovation is now again a priority. With the Education Centre being the central 'hub' where RVS employees and stakeholders come together, to collaborate, learn, and innovate it is important the spaces in the building support this work.

Important changes proposed for the Education Centre include enhanced safety considerations for the reception desk, additional storage space, increasing the size and flexibility of the Wildrose Room,

DIRECTIVE FOR ACTION



TO: THE BOARD OF TRUSTEES

FROM: THE SUPERINTENDENT OF SCHOOLS

reducing 'open areas' in the foyer and replacing them with work/meeting rooms. Also included will be updates to the acoustics, audio-visual system, and the addition and needed replacement of the accordion walls in the Wildrose. Please see attachment for more detail of proposed changes.

Until the tender for construction is closed and bids are reviewed, the actual cost for the renovation is unknown. Preliminary budget for this project is in the realm of \$850,000 – 1,400,000 to retrofit the space. This proposed budget is a wide gap, as construction cost are currently very difficult to determine due to the uncertainties in supply chain and inconsistent activity of the construction business.

RVS currently has \$6.5 million in capital reserves. Within the capital reserve total, \$775,000 is allocated specifically for the renovation of the Education Centre and \$650,000 in maintenance reserves that is not specifically allocated to a future capital purchase. These two amounts are sufficient to cover the high end of the estimated retrofit. RVS administration will continue to keep costs down as much as possible and look to operating budgets to support some of the renovation items. The recommended motion will enable administration to access the capital reserves, to the extent needed, allowing the renovation to proceed.

Alternatives:

Alternative I:

The Board of Trustees approves up to using \$1.4 million from capital reserves to be used for the addition of meeting space, storage, and other updates to the Education Centre.

Alternative II:

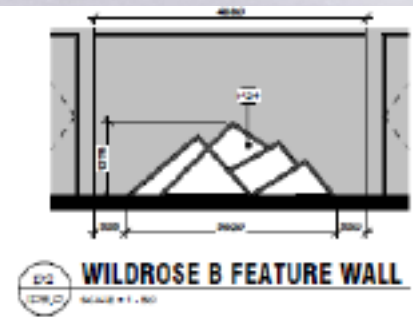
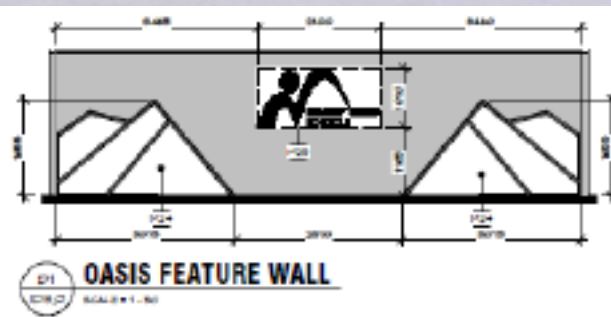
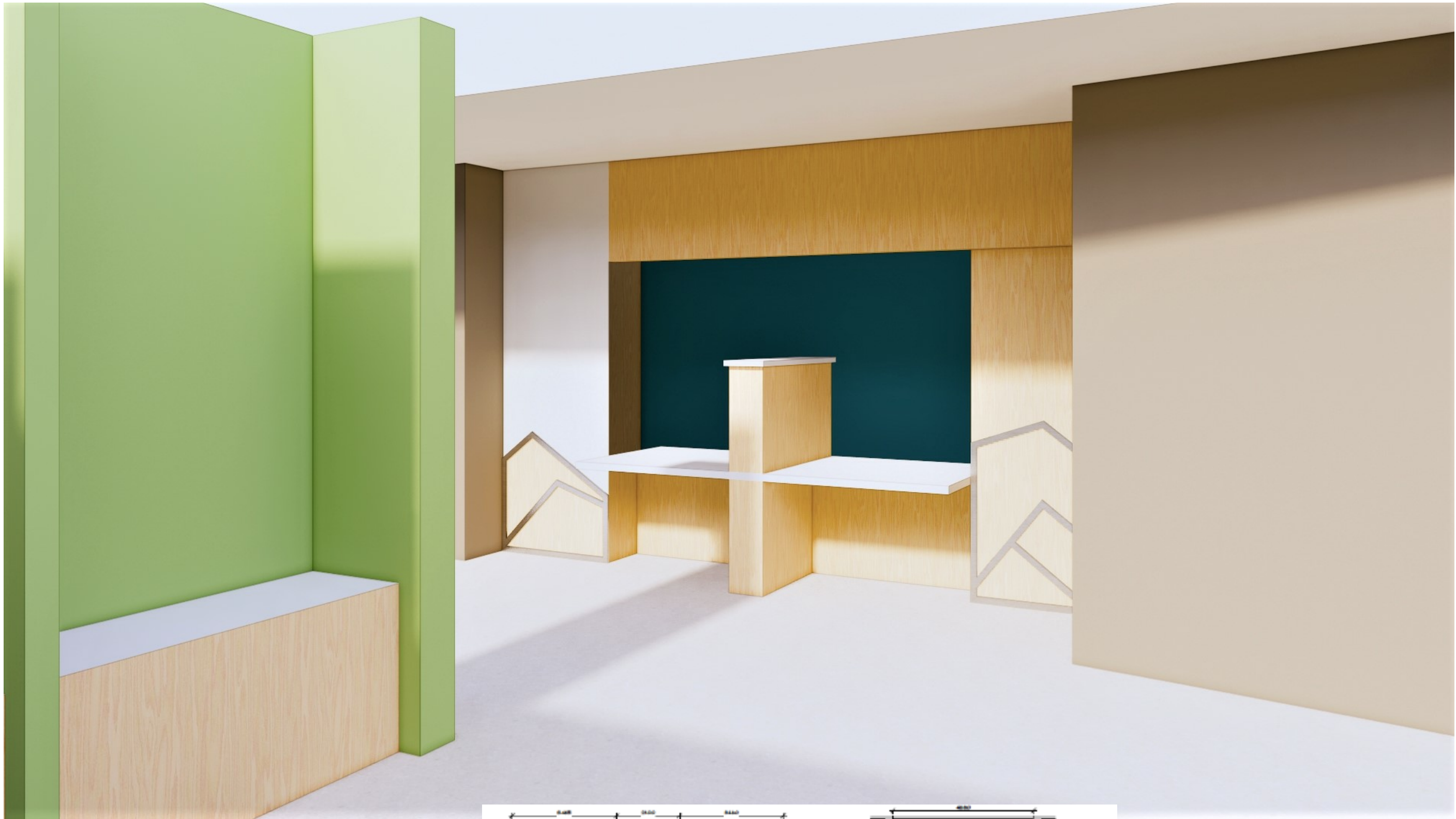
The Board of Trustees directs administration to pursue an alternate course of action.

Recommendation:

The Board of Trustees approves up to using \$1.4 million from capital reserves to be used for the addition of meeting space, storage, and other updates to the Education Centre.



OPTION #1
RVS - RECEPTION DESK
04-28-2021

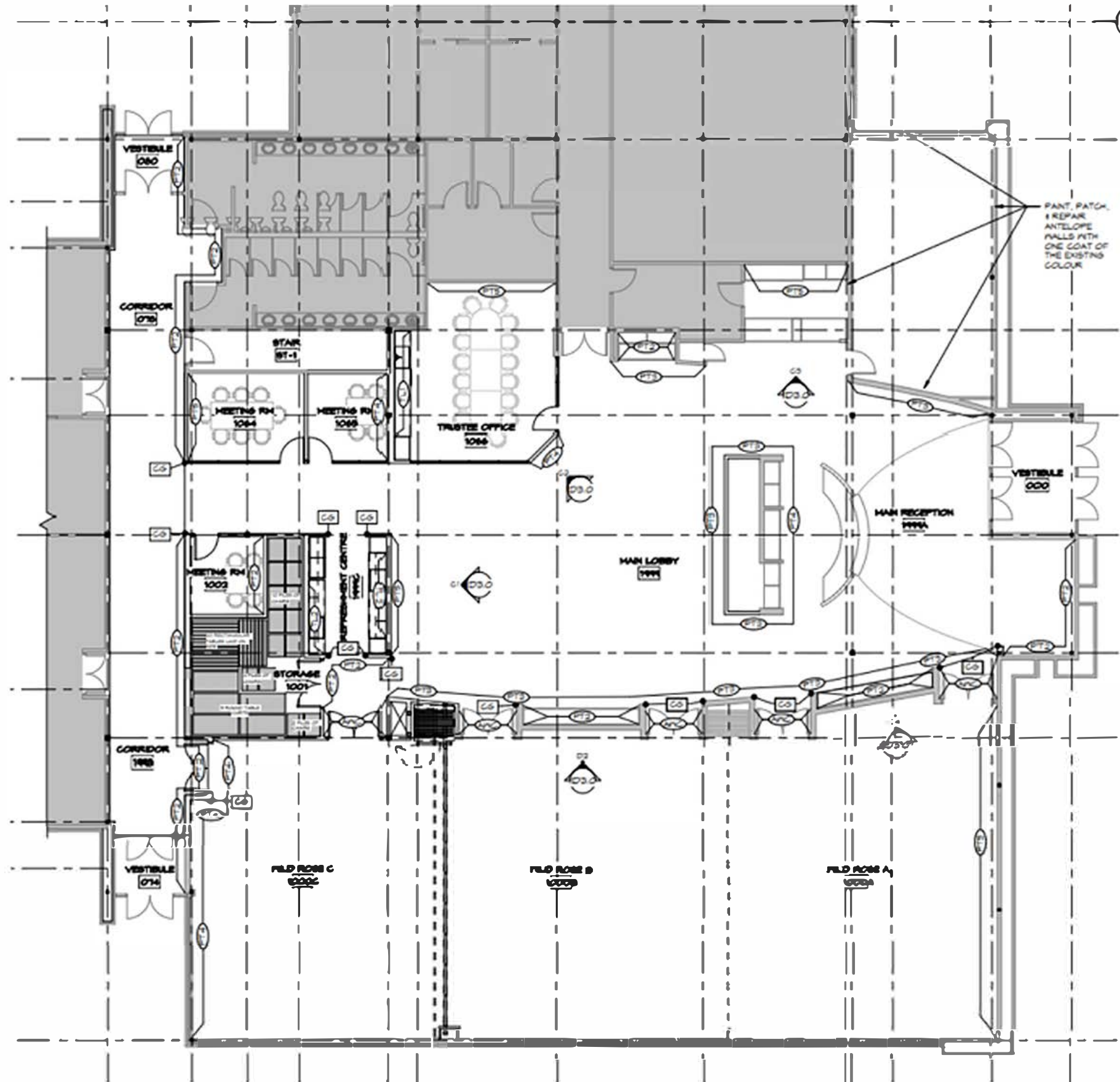




OPTION #1

RVS - TRUSTEE OFFICE

04-13-2021



DIRECTIVE FOR ACTION



TO: THE BOARD OF TRUSTEES

FROM: THE SUPERINTENDENT OF SCHOOLS

Item: Election Boundary Bylaw Revision

Date of Meeting: May 6, 2021

Background:

As outlined in section 76 of the Education Act, ward boundary changes are to be made through a Bylaw as outlined below. Prior to the 2017 election a thorough review of the ward boundaries was completed and approved by the Board and Alberta Education.

Establishment of wards

76(1) The board of a school division may by bylaw

- (a) provide for the nomination and election of trustees by wards and determine the boundaries of the wards, or
- (b) provide for the election of trustees by the general vote of the electors.

(2) A bylaw passed under this section

- (a) does not apply to the general election next following the passing of the bylaw unless it is passed before December 31 in the year prior to that general election being held, and
- (b) does not apply to or affect the composition of the board until the date of the next general election to which the bylaw applies.

(2.1) Subject to subsection (2.2), a board shall provide a copy of a bylaw passed under this section to the Minister as soon as possible after the bylaw is passed.

(2.2) A board shall provide a copy of a bylaw passed under this section to the Minister before December 31 in the year prior to an election year.

Current Status:

There are two changes to ward boundaries that require amendment, following approval of the ward boundary bylaw 2020-1, to reflect two changes to CBE's service area. An extension has been extended by the Minister of Education to allow the changes to take effect for the 2021 election. The deadline for ward boundaries was December 31, 2020, however the Minister has provided an extension to May 31, 2021 for these two boundary adjustments. See Ministerial Order in Appendix A.

The Board will need to pass a bylaw and submit the approved bylaw to Alberta Education. The Bylaw and adjusted ward boundary maps have been included in Appendix A.

DIRECTIVE FOR ACTION



TO: THE BOARD OF TRUSTEES

FROM: THE SUPERINTENDENT OF SCHOOLS

Alternatives:

Alternative I

The Board of Trustees gives three readings to bylaw 2021-1 which, subject to ministerial approval, will amend the ward boundaries.

Alternative II

The Board of Trustees defeats bylaw 2021-1 and decides on an alternate course of action.

Recommendation:

The Board of Trustees follow the steps outlined below to give three readings to bylaw 2021-1 which, subject to ministerial approval, will amend the ward boundaries.

1. First Reading:

Bylaw 2021-1 is required to be read in full for its first reading, following which the recommendation outlined below could be considered.

Recommendation:

The Board of Trustees gives first reading to bylaw 2021-1 as read in full this 6th day of May in the year 2021.

2. Second Reading:

Second reading of a bylaw may be outlined by title and a brief description only, following which the recommendation outlined below could be considered.

Recommendation:

The Board of Trustees gives second reading to bylaw 2021-1 as read in part this 6th day of May in the year 2021.

3. Consider Third Reading:

In order to consider third reading of a bylaw at the same Board meeting, a motion to have the bylaw read a third time must pass unanimously by the members present at the meeting. *The motion outlined in the recommendation below needs to be passed to proceed to the Third reading.*

Recommendation:

The Board of Trustees considers a third reading of bylaw 2021-1 this 6th day of May in the year 2021.

4. Third Reading:

Only permitted if the motion above is passed unanimously by all trustees in attendance. The third reading of the bylaw may be outlined by title and a brief description only, following which the recommendation outlined below could be considered.

Recommendation:

The Board of Trustees gives third reading to bylaw 2021-1 as read in part this 6th day of May in the year 2021.

BY-LAW NO. 2021-01

OF THE

THE ROCKY VIEW SCHOOL DIVISION

A bylaw of The Rocky View School Division in the Province of Alberta, relating to changes made to the electoral wards to amend bylaw 2020-01.

WHEREAS the Board requests the Minister by Ministerial Order, pursuant to Section 76(1)(a) of the *Education Act*, to adjust the wards of the School Division as outlined in attached map in Schedule “A”. The correspondence accompanied with the requests is shown Schedule “B”, “C” and “D”.

Subject to the Minister completing the Ministerial Order as requested herein and subject to the Minister’s approval of this bylaw, the Board hereby resolves:

Pursuant to the Education Act and the Ministerial Order, the ward boundaries will be adjusted as follows:

a. Ward 5 – to remove the area identified as Haskayne

Township 25, Range 2, West 5th Meridian

All those portions of Section 6 lying North of The Bow River; Those portions of the Southwest quarter of Section 7 located in Parcel D, Plan 5126JK; Those portions of the Southeast quarter of Section 7 located within Block 1, Plan 9010497.

AND

Township 25, Range 3, West 5th Meridian

All those portions of Sections 1, 12 and 14 lying North and East of The Bow River (Bears paw Reservoir); All those portions of Section 13 lying North and East of The Bow River (Bears paw Reservoir) and lying West of The City of Calgary Limits.

b. Ward 2 – to remove the area identified as Belvedere

Township 24, Range 28, West of the 4th meridian

Section 18; South half of Section 17

As set out in Section 76(2) of the Education Act, this bylaw shall take effect on the date of the next general election for the Board.

READ A FIRST TIME THIS 6th DAY OF MAY 2021.

Chairman

Secretary-Treasurer

READ A SECOND TIME THIS 6th DAY OF MAY 2021.

Chairman

Secretary-Treasurer

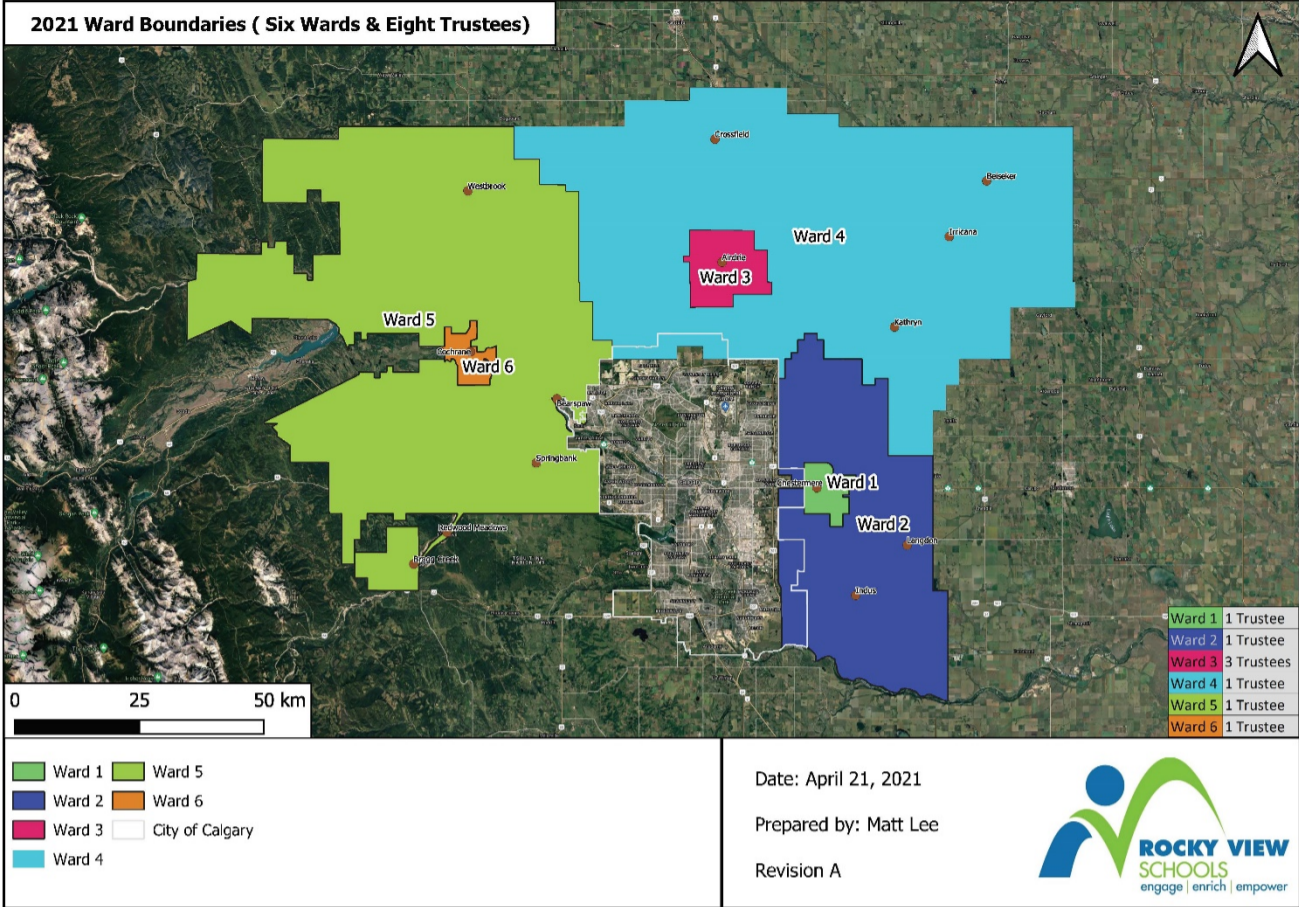
READ A THIRD TIME THIS 6th DAY OF MAY 2021.

Chairman

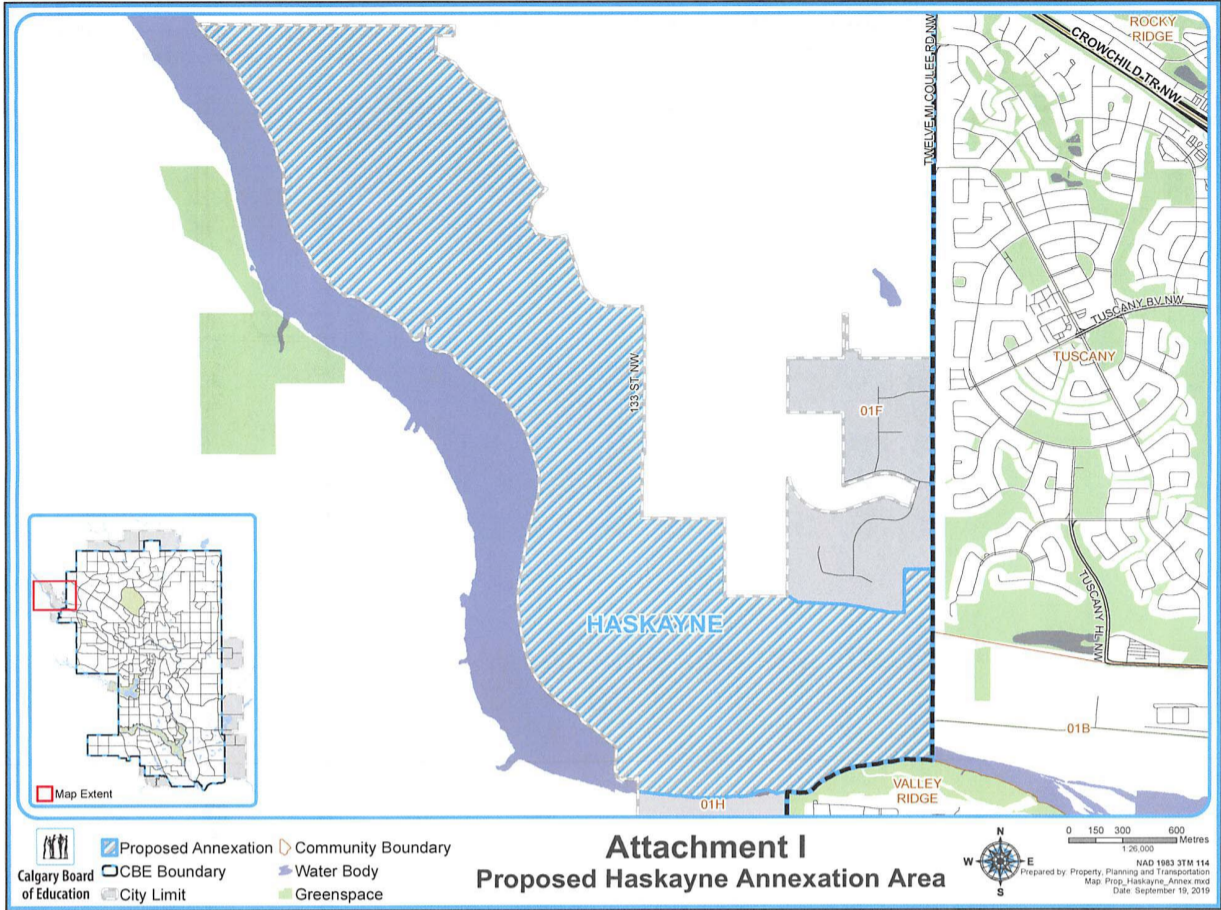
Secretary-Treasurer

SCHEDULE "A"

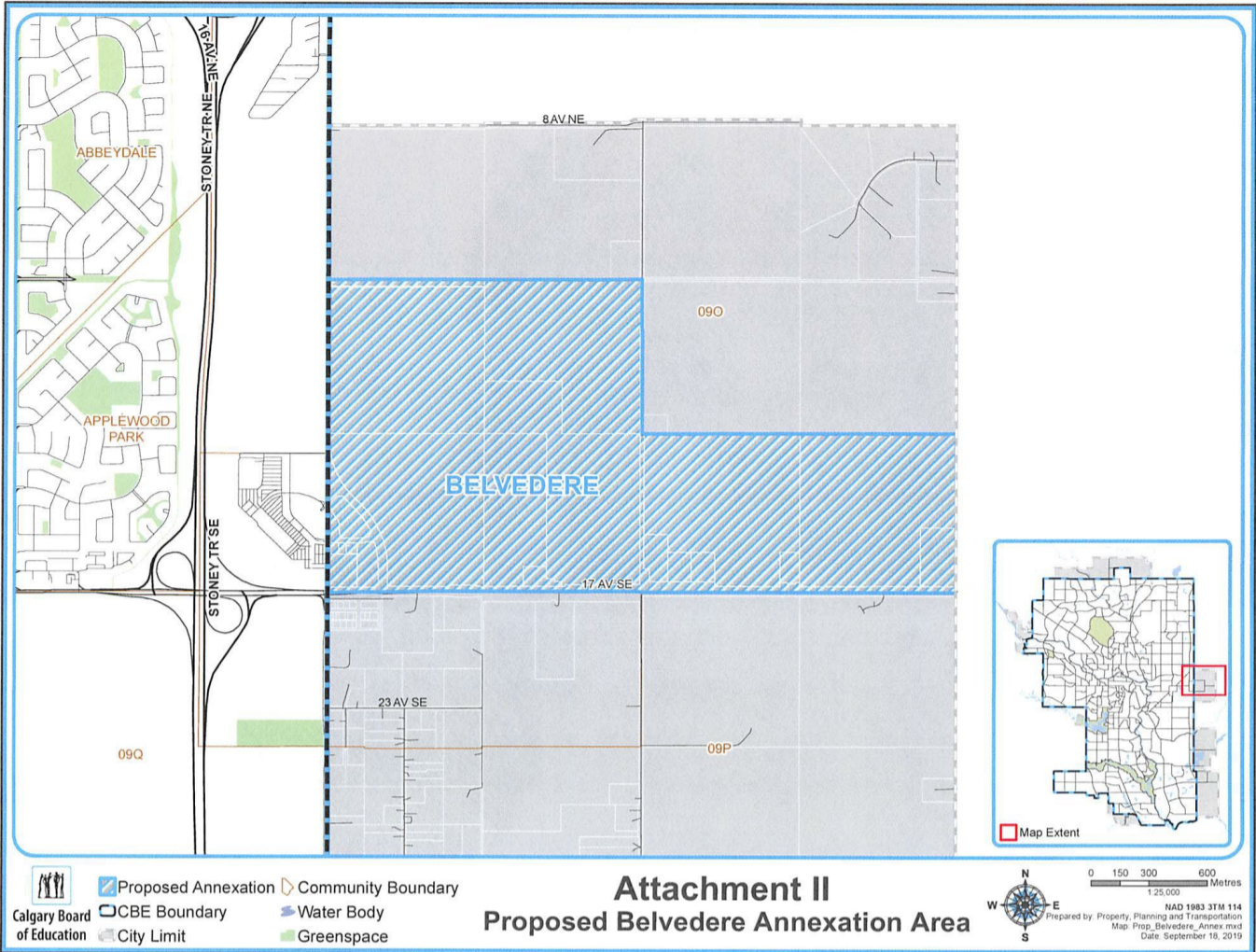
Proposed Ward Boundary Map



SCHEDULE "B"
Adjustment 1 – Calgary – Haskayne Area Structure Plan



SCHEDULE "C"
Adjustment 2 – Calgary Belvedere Annexation



Attachment II
Proposed Belvedere Annexation Area

Schedule "D"
Ministerial Order




Office of the Minister

GOVERNMENT OF ALBERTA
DEPARTMENT OF EDUCATION
MINISTERIAL ORDER (# 006/2021)

I, Adriana LaGrange, Minister of Education, pursuant to Sections 76(2) and 114, and Section 246(1) of the **Education Act**, make the Order in the attached Appendix, being The Calgary School Division and The Rocky View School Division Boundary Adjustment Order, and appointing a further time within which a ward bylaw may be passed by The Calgary School Division and The Rocky View School Division and apply to the next general election.

DATED at Edmonton, Alberta, April 20, 2021.


MINISTER OF EDUCATION

APPENDIX

MINISTERIAL ORDER (# 006/2021)

EDUCATION ACT

The Calgary School Division and The Rocky View School Division Boundary Adjustment Order and Time Extension Order

- 1 Pursuant to Section 246(1) of the *Education Act*, and pursuant to Section 76(2)(a) of the *Education Act*, I appoint a further extension from December 31, 2020, to May 31, 2021, as the time within which a ward bylaw may be passed by The Calgary School Division and The Rocky View School Division and apply to the next general election.

- 2 Pursuant to Order in Council 333/2007 dated August 1, 2007, separated lands from The Municipal District of Rocky View No. 44 and annexed the lands to The City of Calgary.

- 3 Pursuant to Section 114 of the **Education Act**, the following lands are taken from The Chestermere School District No. 1890 (The Rocky View School Division) and are added to The Calgary School Division:

Township 24, Range 28, West of the 4th Meridian
Section 18; South half of Section 17.

- 4 Pursuant to Section 114 of the **Education Act**, the following lands are taken from The Cochrane School District No. 142 (The Rocky View School Division) and are added to The Calgary School Division:

Township 25, Range 2, West 5th Meridian
All those portions of Section 6 lying North of The Bow River; Those portions of the Southwest quarter of Section 7 located in Parcel D, Plan 5126JK; Those portions of the Southeast quarter of Section 7 located within Block 1, Plan 9010497.

Township 25, Range 3, West 5th Meridian
All those portions of Sections 1, 12, and 14 lying North and East of The Bow River (Bears paw Reservoir); All those portions of Section 13 lying North and East of The Bow River (Bears paw Reservoir) and lying West of The City of Calgary Limits.

APPENDIX

MINISTERIAL ORDER (# 006/2021)

- 5 The Calgary School Division shall be comprised of the following lands:

Township 22, Range 29, West of the 4th Meridian

Section 8; Sections 14 to 17 inclusive; Sections 20 to 23 inclusive; Sections 26 to 29 inclusive; Sections 32 to 35 inclusive; Those portions of Sections 7, 18, 19, 30, and 31; Those portions of Sections 3, 4, 10, and 11 lying North of The Bow River; Those portions of Section 9 lying North of The Bow River and Southwest of the left bank of The Bow River and West of the most Westerly road right-of-way of The Deerfoot Trail; Those portions of Sections 25 and 36 contained in Road Plan 741 0459.

Township 23, Range 29, West of the 4th Meridian

Sections 1 to 4 inclusive; Sections 9 to 16 inclusive; Sections 21 to 28 inclusive; Sections 33 to 36 inclusive.

Township 24, Range 28, West of the 4th Meridian

Section 18; South half of Section 17.

Township 24, Range 29, West of the 4th Meridian

Sections 1 to 4 inclusive; Sections 9 to 16 inclusive; Sections 21 to 28 inclusive; Sections 33 to 36 inclusive.

Township 25, Range 29, West of the 4th Meridian

Sections 1 to 4 inclusive; Sections 9 to 16 inclusive; Sections 21 to 28 inclusive; Sections 33 to 36 inclusive.

Township 22, Range 1, West of the 5th Meridian

Sections 12 to 15 inclusive; Sections 21 to 36 inclusive; East half of Section 16; Those portions of Section 11 lying North and East of The Macleod Trail; Legal subdivisions 9, 13, 14, 15, and 16 of Section 19; Legal subdivisions 12, 13, 14, 15, and 16, excluding those lands contained within Plan 1011285, Block 2, Lot 1 of Section 20; Those portions of Sections 19 and 20 contained in Road Plan 1996 I.X.

Township 22, Range 2, West of the 5th Meridian

Sections 25 to 27 inclusive; Sections 34 to 36 inclusive; Those portions of Sections 22 to 24 inclusive contained in Road Plan 2413 I.X.

Township 23, Range 1, West of the 5th Meridian

Sections 1 to 36 inclusive.

APPENDIX

MINISTERIAL ORDER (# 006/2021)

Township 24, Range 1, West of the 5th Meridian
Sections 1 to 36 inclusive.

Township 24, Range 2, West of the 5th Meridian
Sections 1 to 4 inclusive; Sections 9 to 16 inclusive; Sections 21 to 28 inclusive;
Sections 31 to 36 inclusive; That portion of the Northeast quarter of Section 8 contained
in Road Plan 7810831; That portion of the East half of Section 20 contained in Road Plan
7810330.

Township 25, Range 1, West of the 5th Meridian
Sections 1 to 36 inclusive, excluding that portion of the North half of Section 36 lying
East of the West limit of main Highway No. 2A as shown on Road Plan 7598 J.K.

Township 25, Range 2, West of the 5th Meridian
Sections 1 to 5 inclusive; Sections 8 to 17 inclusive; Sections 20 to 28 inclusive;
Sections 33 to 36 inclusive; All those portions of Section 6 lying North of The Bow
River; That portion of the Southeast quarter of Section 6 lying South of The Bow River;
Those portions of the Southwest quarter of Section 7 located in Parcel D, Plan 5126JK;
Those portions of the Southeast quarter of Section 7 located within Block 1, Plan
9010497.

Township 25, Range 3, West 5th Meridian
All those portions of Sections 1, 12, and 14 lying North and East of The Bow River
(Bears paw Reservoir); All those portions of Section 13 lying North and East of The Bow
River (Bears paw Reservoir) and lying West of The City of Calgary Limits.

Township 26, Range 1, West of the 5th Meridian
Section 3; East half of Section 4.

Township 26, Range 2, West of the 5th Meridian
Sections 1 and 2 contained in Road Plan 8011000.

All government road allowances and government road allowance intersections
intervening and adjoining the above described lands.

- 6 The Rocky View School Division shall be comprised of the following lands:

Township 21, Range 27, West of the 4th Meridian
Sections 25 to 27 inclusive; Sections 31 to 36 inclusive; Those portions of Sections 22,
23, 24, 28, 29, and 30 lying North of The Bow River.

APPENDIX

MINISTERIAL ORDER (# 006/2021)

Township 21, Range 28, West of the 4th Meridian

Section 36; Those portions of Sections 25 and 26 lying North of The Bow River; Those portions of Sections 34 and 35 lying North and East of The Bow River.

Township 22, Range 27, West of the 4th Meridian

Sections 1 to 36 inclusive.

Township 22, Range 28, West of the 4th Meridian

Sections 1 and 2; Sections 9 to 36 inclusive; Those portions of Sections 3, 4, 5, 7, and 8 lying North and East of The Bow River.

Township 22, Range 29, West of the 4th Meridian

Sections 13, 24, 25, and 36; That portion of Section 12 lying North of The Bow River.

Township 23, Range 27, West of the 4th Meridian

Sections 1 to 36 inclusive.

Township 23, Range 28, West of the 4th Meridian

Sections 1 to 36 inclusive.

Township 24, Range 27, West of the 4th Meridian

Sections 1 to 36 inclusive.

Township 24, Range 28, West of the 4th Meridian

Sections 1 to 16 inclusive; Sections 19 to 36 inclusive; North half of Section 17.

Township 25, Range 26, West of the 4th Meridian

Sections 18 and 19; Sections 29 to 32 inclusive.

Township 25, Range 27, West of the 4th Meridian

Sections 1 to 36 inclusive.

Township 25, Range 28, West of the 4th Meridian

Sections 1 to 36 inclusive.

Township 26, Range 25, West of the 4th Meridian

Sections 26 to 35 inclusive.

Township 26, Range 26, West of the 4th Meridian

Sections 1 to 36 inclusive.

APPENDIX

MINISTERIAL ORDER (# 006/2021)

Township 26, Range 27, West of the 4th Meridian
Sections 1 to 36 inclusive.

Township 26, Range 28, West of the 4th Meridian
Sections 1 to 36 inclusive.

Township 26, Range 29, West of the 4th Meridian
Sections 1 to 3 inclusive; Sections 10 to 15 inclusive; Sections 22 to 27 inclusive;
Sections 34 to 36 inclusive; Those portions of Sections 4, 9, 16, 21, 28, and 33.

Township 27, Range 25, West of the 4th Meridian
Sections 1 to 36 inclusive.

Township 27, Range 26, West of the 4th Meridian
Sections 1 to 36 inclusive.

Township 27, Range 27, West of the 4th Meridian
Sections 1 to 36 inclusive.

Township 27, Range 28, West of the 4th Meridian
Sections 1 to 36 inclusive.

Township 27, Range 29, West of the 4th Meridian
Sections 1 and 2; Sections 11 to 14 inclusive; Sections 23 to 26 inclusive; Sections 35
and 36; Those portions of Sections 3, 10, 15, 22, 27, and 34.

Township 28, Range 25, West of the 4th Meridian
Sections 1 to 36 inclusive.

Township 28, Range 26, West of the 4th Meridian
Sections 1 to 36 inclusive.

Township 28, Range 27, West of the 4th Meridian
Sections 1 to 36 inclusive.

Township 28, Range 28, West of the 4th Meridian
Sections 1 to 36 inclusive.

Township 28, Range 29, West of the 4th Meridian
Sections 1 and 2; Sections 11 to 14 inclusive; Sections 23 to 26 inclusive; Sections 35
and 36; Those portions of Sections 3, 10, 15, 22, 27, and 34.

APPENDIX

MINISTERIAL ORDER (# 006/2021)

Township 29, Range 28, West of the 4th Meridian
Sections 1 to 8 inclusive; Sections 17 and 18.

Township 29, Range 29, West of the 4th Meridian
Sections 1 and 2; Sections 11 to 14 inclusive; Those portions of Sections 3, 10, and 15.

Township 23, Range 4, West of the 5th Meridian
Those portions of Sections 18, 19, 20, 28, 29, 33, and 34 contained within Lots 6, 7, and 8, Plan 57814CLS, The Tsuu T'ina Reserve No. 145.

Township 23, Range 5, West of the 5th Meridian
Sections 1 to 4 inclusive; Sections 8 to 19 inclusive; Sections 23 to 26 inclusive; Sections 30 and 31; North half and Southwest quarter of Section 32; East halves of Sections 22 and 27; West half of Section 29; North half of Section 35.

Township 24, Range 2, West of the 5th Meridian
Sections 5 to 8 inclusive, excluding that portion of the Northeast quarter of Section 8 contained in Road Plan 7810831; Sections 17 to 20 inclusive, excluding that portion of the East half of Section 20 contained in Road Plan 7810330; Sections 29 and 30.

Township 24, Range 3, West of the 5th Meridian
Sections 1 to 36 inclusive.

Township 24, Range 4, West of the 5th Meridian
Sections 1 to 36 inclusive.

Township 24, Range 5, West of the 5th Meridian
Sections 1 to 36 inclusive.

Township 24, Range 6, West of the 5th Meridian
Section 1; Sections 12 and 13; Sections 24 to 28 inclusive; Sections 33 to 36 inclusive.

Township 25, Range 2, West of the 5th Meridian
Sections 18 and 19; Sections 29 to 32 inclusive; That portion of the Southwest quarter of Section 6 lying South of The Bow River; Those portions of Section 7 not included in Parcel D, Plan 5126JK and Block 1, Plan 9010497.

Township 25, Range 3, West of the 5th Meridian
Sections 2 to 11 inclusive; Sections 15 to 36 inclusive; All those portions of Sections 1, 12, and 14 lying South and West of The Bow River; All those portions of Section 13 lying East of The City of Calgary Limits.

APPENDIX

MINISTERIAL ORDER (# 006/2021)

Township 25, Range 4, West of the 5th Meridian
Sections 1 to 36 inclusive.

Township 25, Range 5, West of the 5th Meridian
Sections 1 to 27 inclusive; The Northwest quarter and South half of Section 28; Those portions of Sections 29 and 30 lying outside The Stoney Reserve; The Southeast quarter of Section 34.

Township 25, Range 6, West of the 5th Meridian
Sections 1 to 5 inclusive; Sections 9 to 14 inclusive; Those portions of Sections 7, 8, 15, 16, 17, 23, 24, and 25 lying South of The Stoney Reserve; That portion of Section 31 lying north of The Bow River and outside The Stoney Reserve.

Township 25, Range 7, West of the 5th Meridian
That portion of Section 12 lying outside The Stoney Reserve; That portion of Section 36 lying north of The Bow River and outside The Stoney Reserve.

Township 26, Range 1, West of the 5th Meridian
Sections 1 and 2; Sections 5 to 36 inclusive, excluding Road Plan 620 L.K. in Sections 25 and 36; West half of Section 4.

Township 26, Range 2, West of the 5th Meridian
Section 3 to 36 inclusive; Those portions of Sections 1 and 2 not contained in Road Plan 8011000.

Township 26, Range 3, West of the 5th Meridian
Sections 1 to 36 inclusive.

Township 26, Range 4, West of the 5th Meridian
Sections 1 to 4 inclusive; Sections 7 to 36 inclusive; That portion of the Northeast quarter of Section 5 lying North of The Bow River, including the Canadian Pacific Rail Right of Way.

Township 26, Range 5, West of the 5th Meridian
Section 13; Sections 17 to 36 inclusive; Northeast quarter of Section 8; Those portions of the Northwest quarter of Section 6 lying outside The Stoney Reserve; Those portions of Section 7 lying North and East of The Stoney Reserve; Those portions of Sections 14, 15, and 16 lying North of The Bow River.

APPENDIX

MINISTERIAL ORDER (# 006/2021)

Township 26, Range 6, West of the 5th Meridian

Sections 7 and 13; Sections 18 to 36 inclusive; Those portions of Sections 4, 5, 6, 9, 10, and 14 lying North of The Bow River and lying outside of The Stoney Reserve; Those portions of Sections 8, 15, 16, and 17 lying outside of The Stoney Reserve.

Township 26, Range 7, West of the 5th Meridian

Section 13; Sections 18 to 36 inclusive; Those portions of Sections 1, 7, 8, 11, 12, 14, 15, 16, and 17 lying North of The Stoney Reserve.

Township 27, Range 1, West of the 5th Meridian

Sections 1 to 36 inclusive, excluding those lands in Section 13 included in Road Plan 4209 E.Z.

Township 27, Range 2, West of the 5th Meridian

Sections 1 to 36 inclusive.

Township 27, Range 3, West of the 5th Meridian

Sections 1 to 36 inclusive.

Township 27, Range 4, West of the 5th Meridian

Sections 1 to 36 inclusive.

Township 27, Range 5, West of the 5th Meridian

Sections 1 to 36 inclusive.

Township 27, Range 6, West of the 5th Meridian

Sections 1 and 2; Sections 5 to 8 inclusive; Sections 11, 12, and 17; South halves and Northwest quarters of Sections 4 and 18; West half of Section 9; Southwest quarter of Section 3.

Township 27, Range 7, West of the 5th Meridian

Sections 1 to 5 inclusive; Sections 8 to 12 inclusive.

Township 28, Range 1, West of the 5th Meridian

Sections 1 to 36 inclusive.

Township 28, Range 2, West of the 5th Meridian

Sections 1 to 36 inclusive.

Township 28, Range 3, West of the 5th Meridian

Sections 1 to 36 inclusive.

APPENDIX

MINISTERIAL ORDER (# 006/2021)

Township 28, Range 4, West of the 5th Meridian
Sections 1 to 36 inclusive.

Township 28, Range 5, West of the 5th Meridian
Sections 1 to 36 inclusive.

Township 28, Range 6, West of the 5th Meridian
Section 1; Sections 4 to 30 inclusive; East half of Section 2; West half of Section 3.

Township 29, Range 1, West of the 5th Meridian
Sections 1 to 15 inclusive.

Township 29, Range 2, West of the 5th Meridian
Sections 1, 2, 11, and 12.

- 7 This Order shall come into effect upon signing.